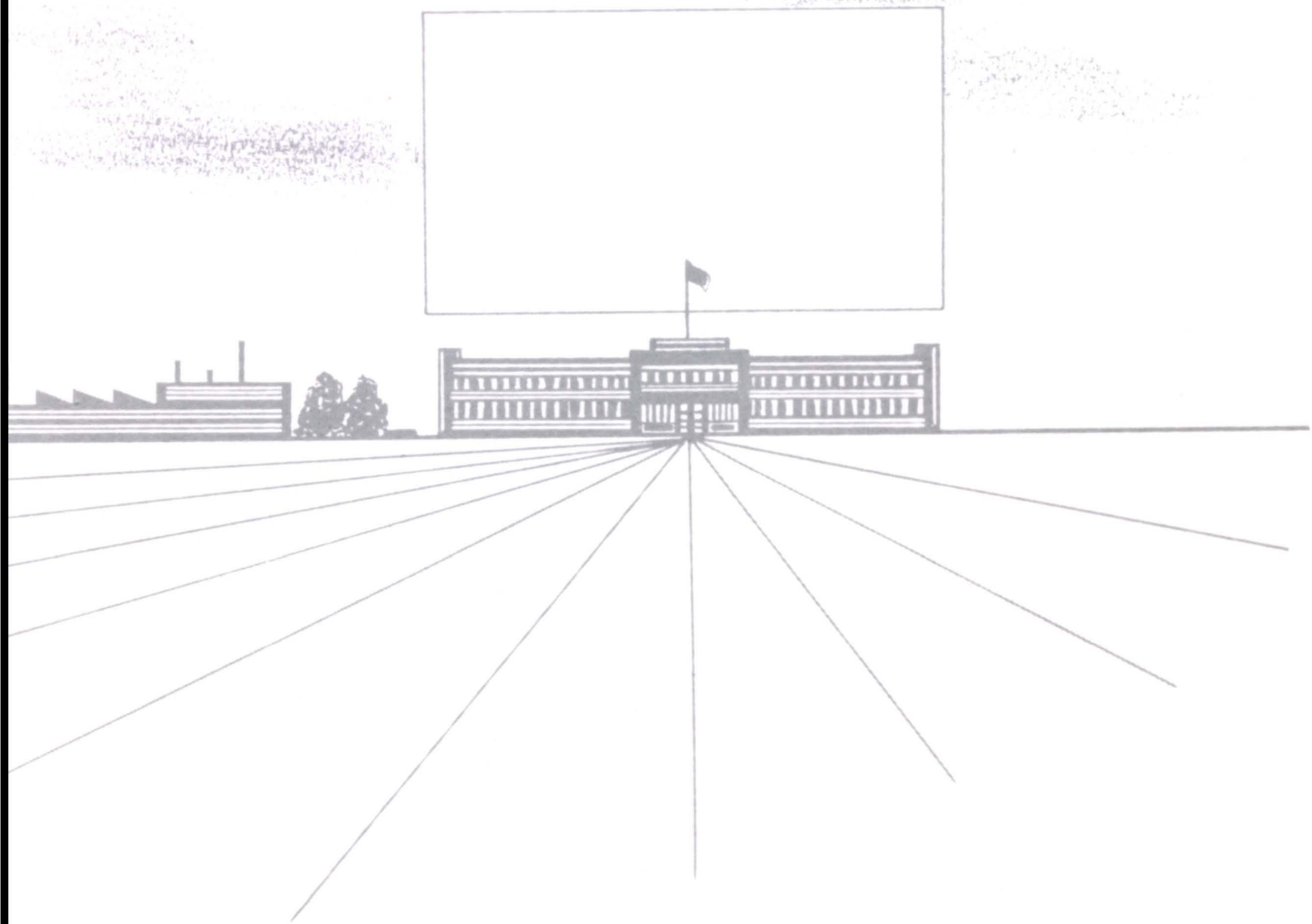




BONA VENTURE

1 9 5 8







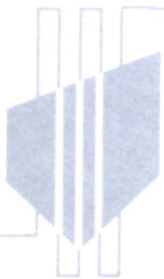
1958

BONA VENTURE



St. Bonaventure High School

Columbus, Nebraska



Dedication

We, the Senior Class, of 1958



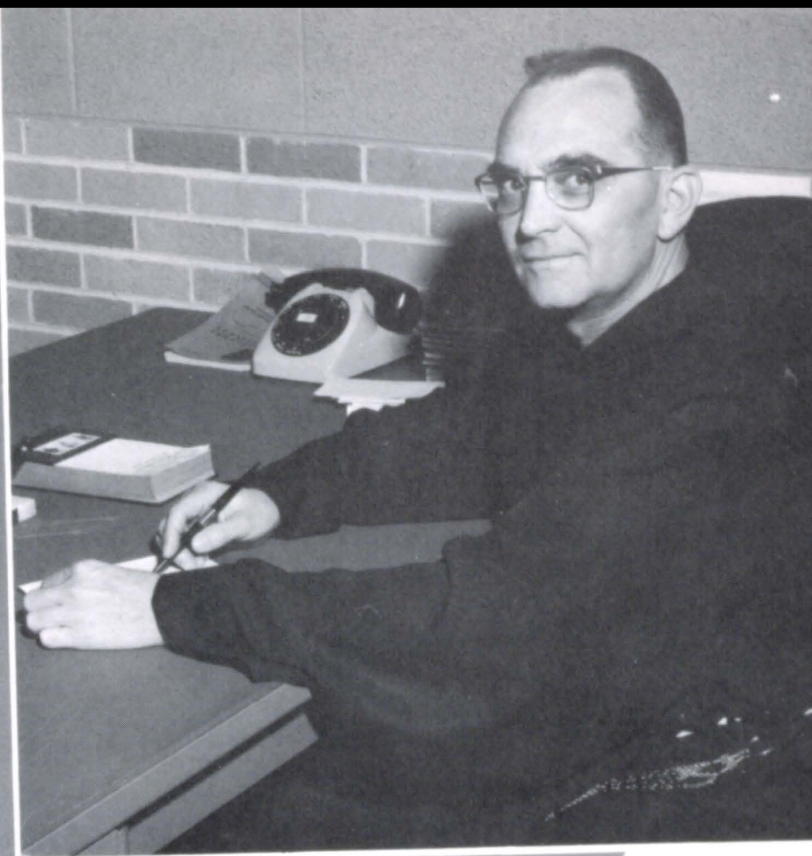
Gratefully dedicate this volume of our annual to Sister M. Rayneria, as a tribute of admiration for her ideals and services to us, whose untiring patience and countless sacrifices have made our high school years most memorable.

Superintendent's Message

To the Senior of 1958

Sincerest congratulations! You have spent many years preparing yourselves for leadership in the world. Accept this responsibility confidently! A proverb says: "Believe in yourself, but don't be too easily convinced." Remember that the school from which nobody ever graduates is the school of experience.

We wish you success and may God bless you in your work.

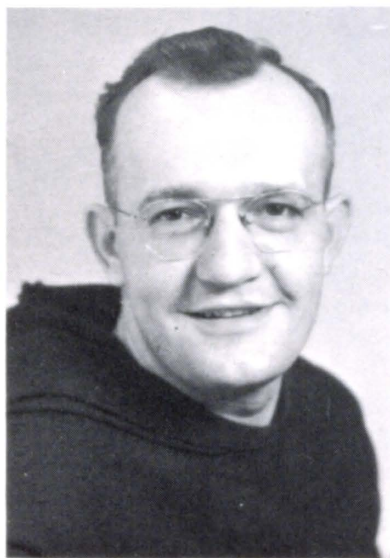


Frr. Roch Hettinger, O.F.M.

Rev. JOHN
SCHNEIGENBERG
Religion



Rev. KENNETH
SCHLESSER
Religion
Music



Rev. MELCHIOR
TOCZEK
Religion



Rev. TIMOTHY
HEALY
Religion
Athletics

Sponsored by
RAMBOUR REALTY COMPANY



Faculty



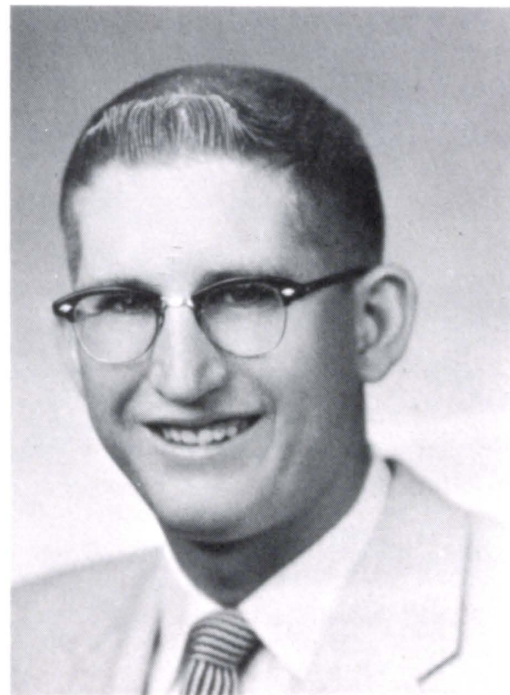
SISTER M. GERARDA
A.B. St. Joseph, Albuquerque
B.L.S. Denver University
Librarian



Mr. CHARLES WOLEVER
A.B. in P. ED. Tarkio, Mo.
Athletics, Social Studies



SISTER M. FELICIANA
A.B. St. Francis College
Ft. Wayne, Ind.
Study



Mr. ROBERT STEMPER
A.B. Kearney State
Teachers College
Athletics
Shop

Faculty

Mrs. MILDRED HERROD
A.B. St. Mary's, Notre Dame, Ind.
M.A. University of Colo.
English



SISTER M. OSCARIA
A.B. St. Francis, Ft. Wayne, Ind.
Social Studies
English



Mr. JOE VAN ACKERAN
A.B. in M. University of Colo.
Music



SISTER M. LEOLA
A.B. St. Francis
English
Science

Faculty



SISTER M. RAYNERIA
A.B. Greely, College, Colo.
M.A. Creighton University
Principal, Social Studies



SISTER M. CYRIL
A.B. St. Joseph's
Albuquerque, N. M.
M.C.S. University of Denver
Commerce



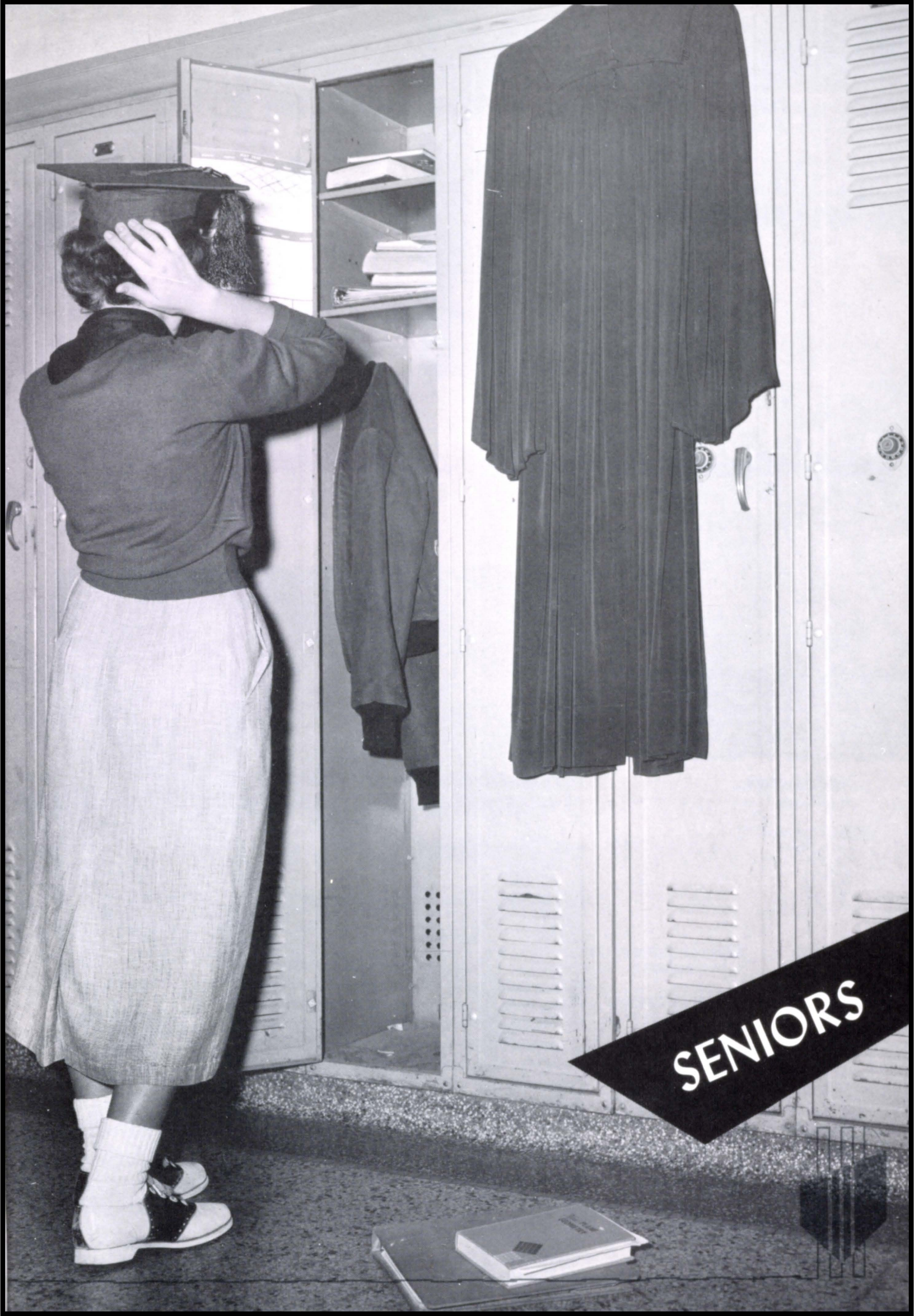
SISTER M. EDWINA
A.B. St. Francis, Ft. Wayne, Ind.
M.S. Creighton University
Science, Latin



SISTER M. BERNARDIS
B.S. Creighton University
M.A. Creighton University
Mathematics

“Live Better . . . Electrically”

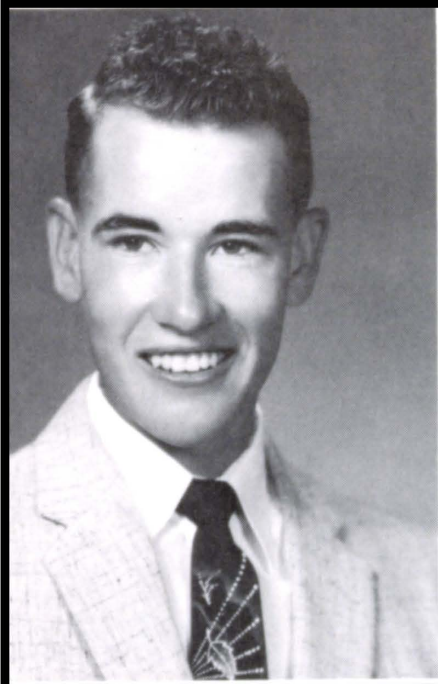
CONSUMERS PUBLIC POWER DISTRICT



SENIORS

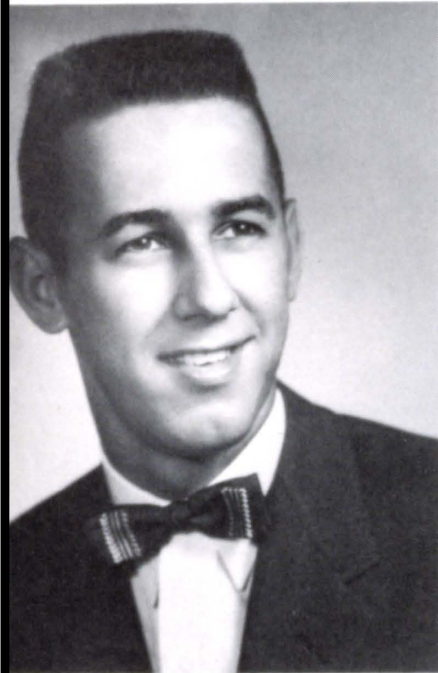


Seniors



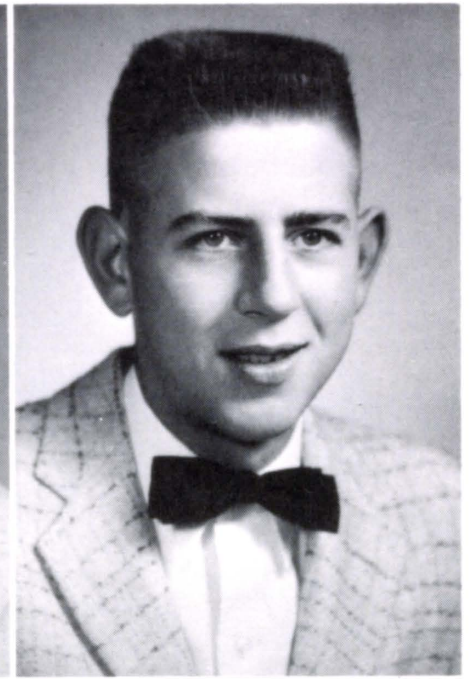
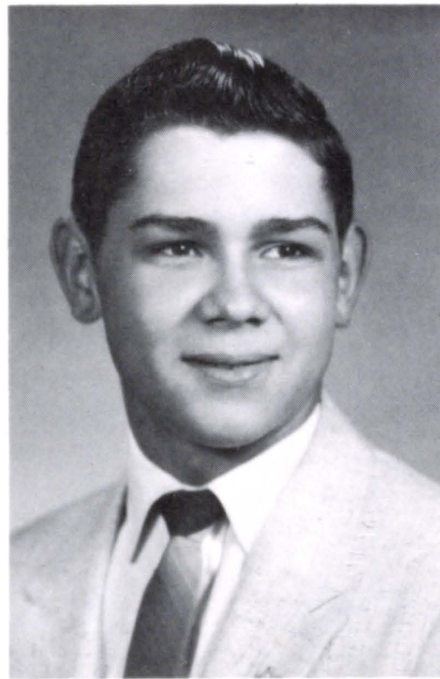
WILLIAM ANDREAS
"Polite"

Class



JOSEPH ADAMY
"Timid"

GEORGE ARASMITH
"Sly"



ROBERT AUGUSTINE
"Relaxed"

KENNETH BACKES
"Quiet"

JUDITH BATOR
"Jovial"

ROBERT BECK
"Mischievous"



Sponsored by
LANDGREN STUDIO



Seniors

of 1958



ELAINE BIERMAN
"Humerous"



ELAINE BLAHAK
"Humerous"

ROBERT BURES
"Shy"



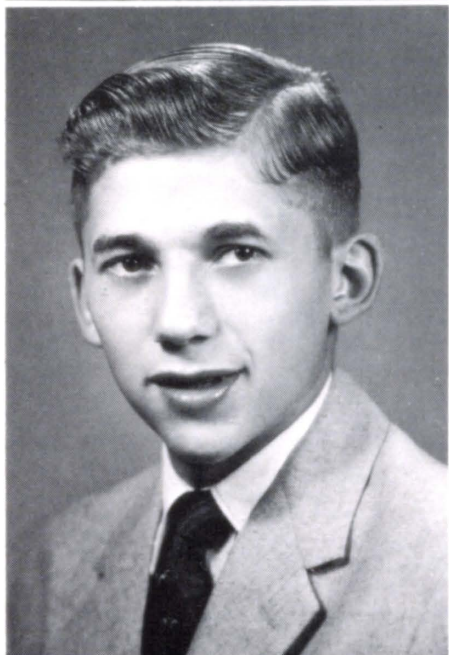
JANE BURZYNSKI
"Optimistic"



JO ANN BOTHE
"Fun Loving"

GERALD BRAUN
"Determined"

GERALDINE COCKSON
"Musical"



Sponsored by
SCHWESER'S



Seniors

BILLIE JEAN COLES
"Imaginative"

DENNIS DALY
"Studios"

MARY JO DUSH
"Meek"

HELEN GALLEY
"Generous"

LEROY HAMLING
"Reliable"

CLURES HOBENSIEFKEN
"Genial"



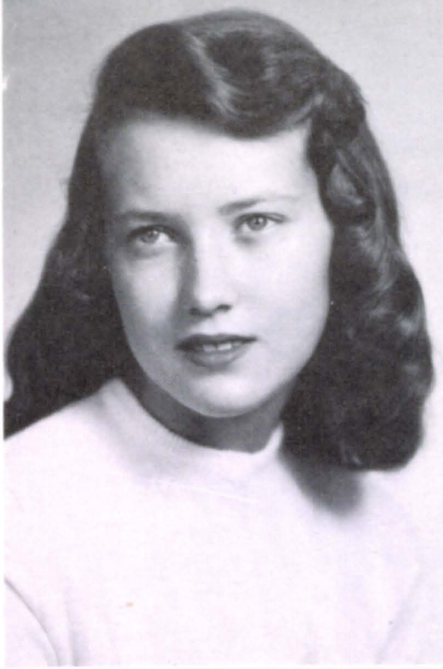
Sponsored by
HOLYS VENDING CO.

DALE HANKE
"Comical"

JANE HOLYS
"Unpredictable"



Class



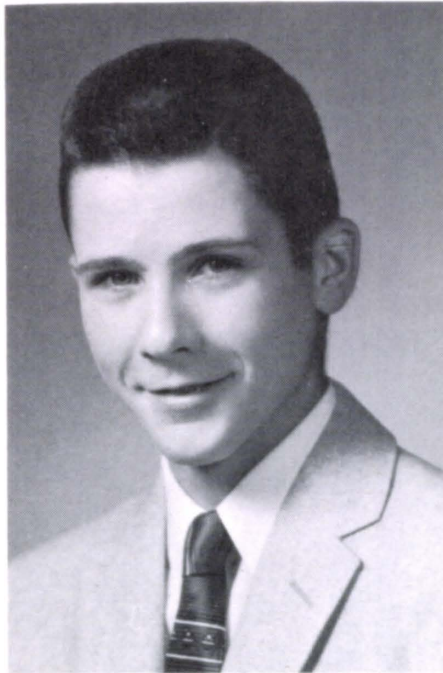
Seniors

MARY HILGER
"Marylike"

ALOYSIUS JARECKI
"Personable"

GAYLORD KAFKA
"Cooperative"

JEROME KNIEFEL
"Industrious"



NORMA KRETZ
"Sincere"



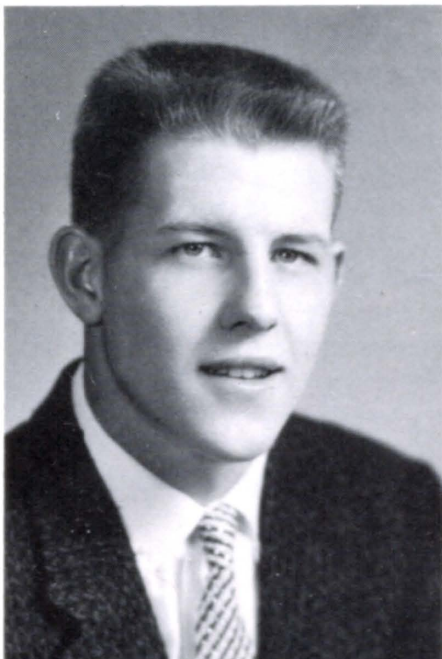
Sponsored by

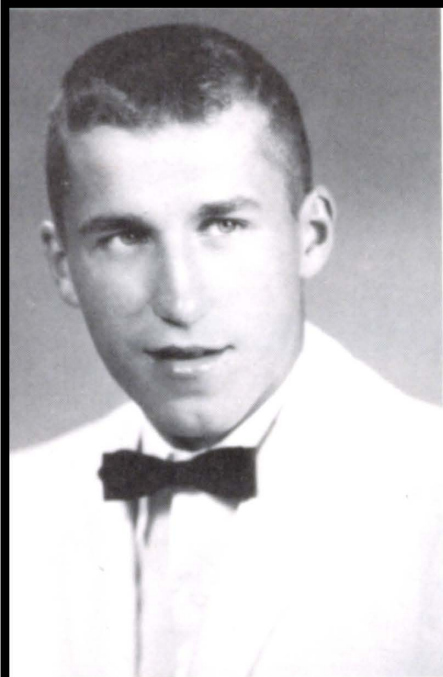
HEYNEN LUMBER CO.

DONALD KAMINSKI
"Kingly"

DIANE KOSIBA
"Carefree"

of 1958





Seniors



KATHLEEN KURTENBACK
"Intelligent"

Class

MAUREEN MICEK
"Thoughtful"

MARY ELLEN MINETTE
"Sweet"

ANTHONY KROENKE
"Witty"

PAUL LANGAN
"Oratorius"



Sponsored by
HABCO MFG. CO.



LEA MARKHOFER
"Flexible"

SHARON MESSERSMITH
"Considerate"



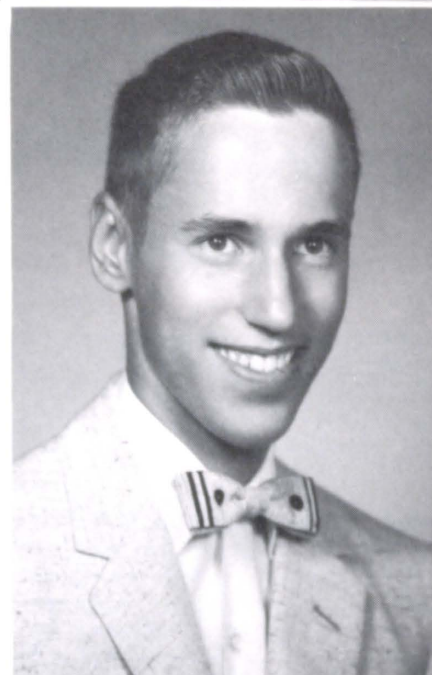
Seniors



of 1958



ARDA MEYSENBURG
"Active"



MARGARET PENSICK
"Talkative"

WILLIAM REUSS
"Supersonic"

RICHARD SANSONI
"Boistrous"

JANET SEBEK
"Likeable"



Sponsored by
GERHOLD COMPANY

LEROY SIELER
"Silent"

DOLORES SHEFCYK
"Collected"



Seniors



JANET SMITH
"Enthusiastic"
EVA STACHURA
"Neat"



JANET SLIVA
"Friendly"

MARGARET SLIVA
"Hearty"

KATHRYN SHONKA
"Perservering"

JANE SMITH
"Patient"

PATRICIA SLEDDENS
"Pretty"



Class

Sponsored by
HOESSEL ELECTRICAL SERVICE



Seniors



CARROLL WEMHOFF
"Convincing"

DELORES ZYWIEC
"Helpful"

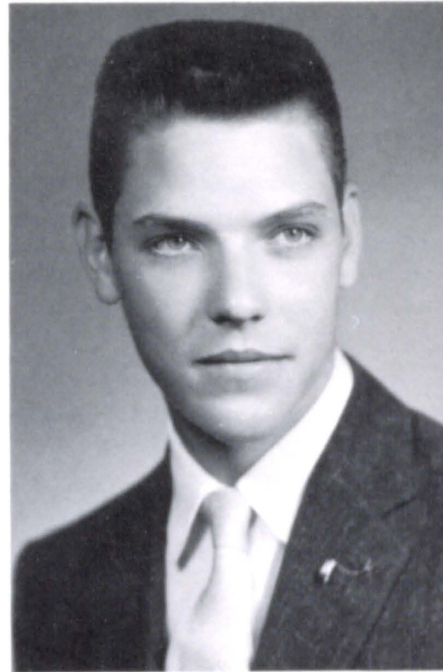
PATRICIA STEINER
"Calm"

PATRICK TOOLEY
"Respectable"

JUDITH TYLLE
"Petite"

NICKOLAS WHEELER
"Undisturbed"

MARY KAY WOZNY
"Energetic"



of 1958



Sponsored by

TOOLEY DRUG COMPANY



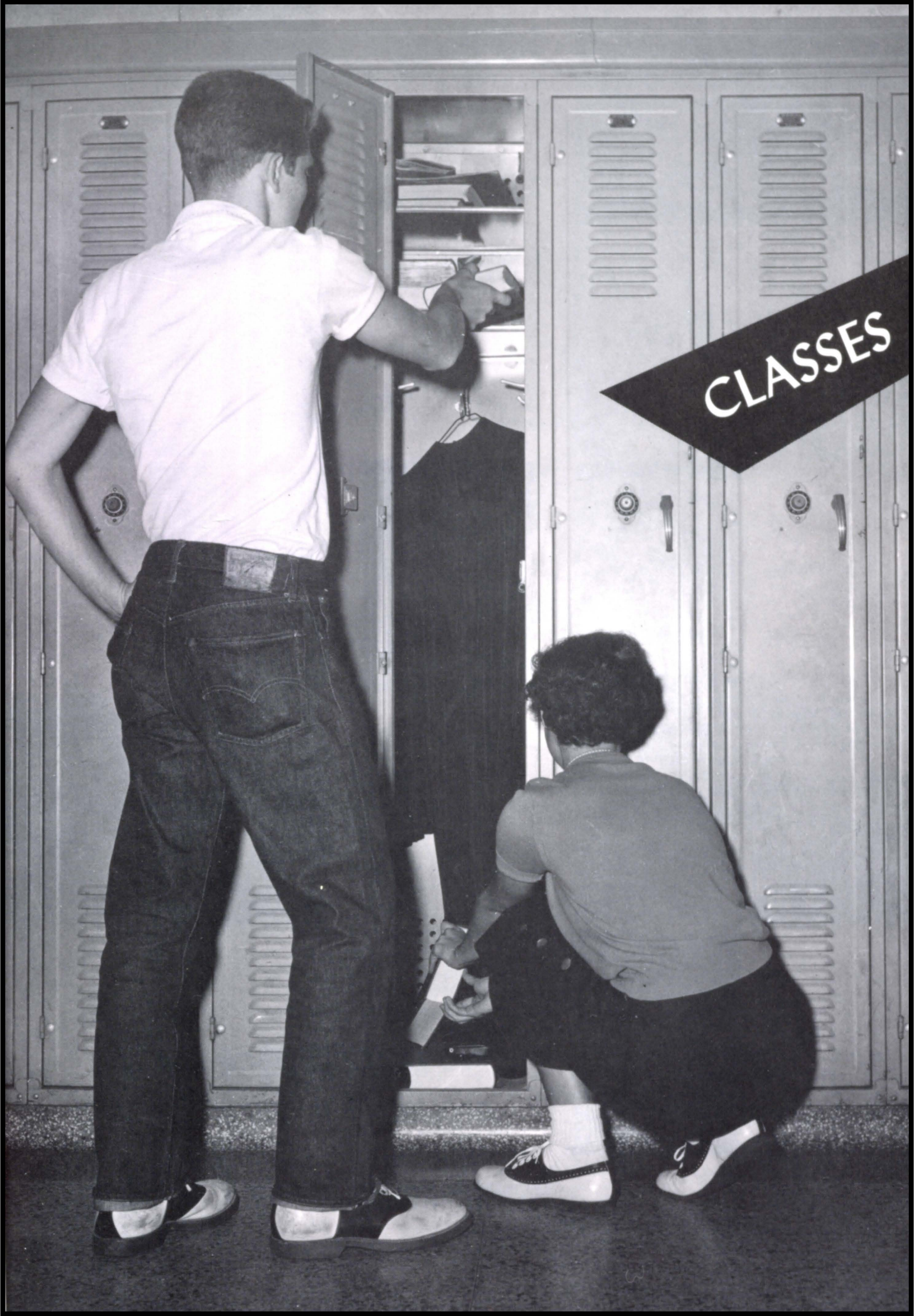
Senior Class Officers

Treas. C. Wemhoff, Pres. J. Tylle, Vice-Pres. R. Sansoni, Sec. K. Shonka.



Home Room I and II Officers

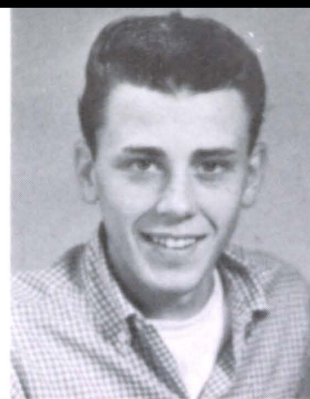
J. Sebek Rm. I Pres., G. Cockson Rm. II Sec.-Treas., W. Reuss Rm. I
Vice-Pres., J. Holys Rm. I Sec.-Treas., R. Augustine Rm. II Pres.



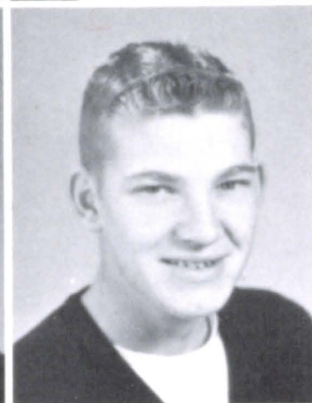
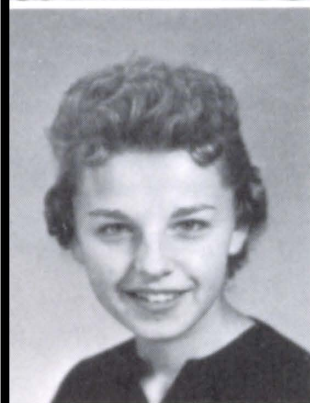
CLASSES



M. Adamy
D. Altmanshofer



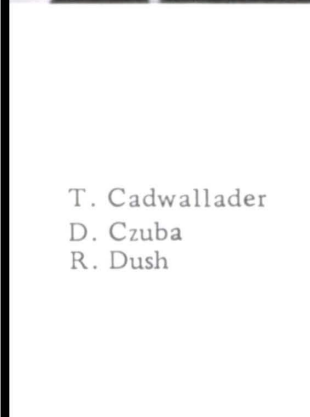
L. Andreas
C. Backes



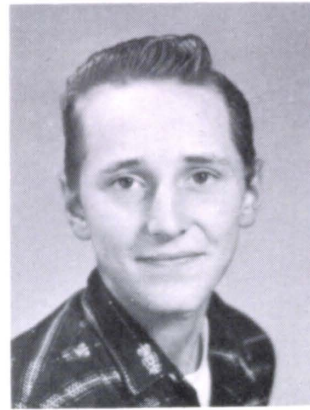
P. Badstieber
D. Blahak



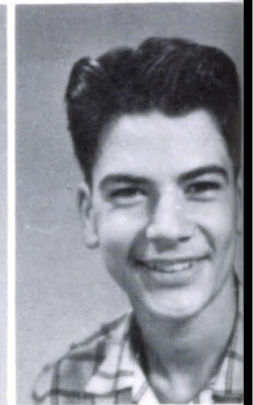
B. Bonk
J. Bothe



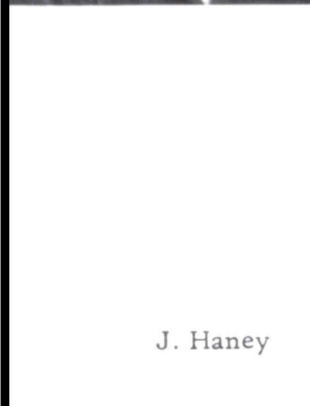
T. Cadwallader
D. Czuba
R. Dush



N. Foust
D. Gablenz



J. Gregorius
G. Haller



J. Haney

Juniors

MONTGOMERY WARD & CO.





R. Hanke
K. Heiman



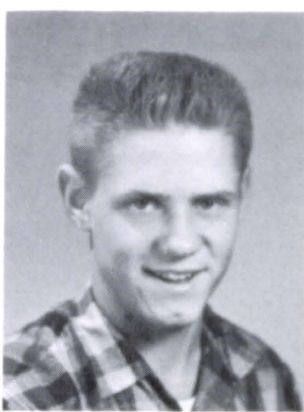
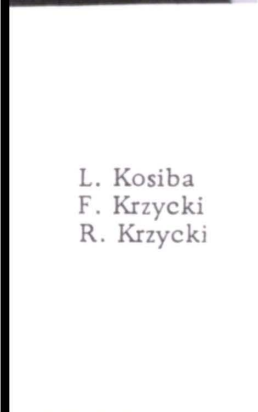
C. Huhman
L. Jarecki



J. Jarecki
C. Johnson

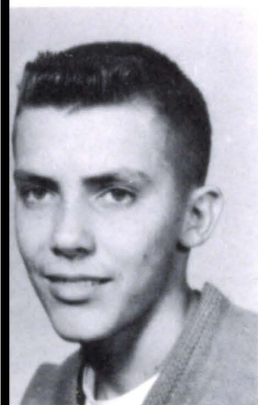


R. Jonas
M. Keuter



L. Kosiba
F. Krzycki
R. Krzycki

P. Kudron
A. Kusek



K. Kuta
L. Kuta

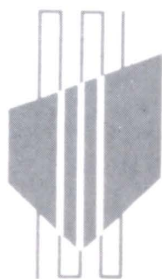
Class of 1959

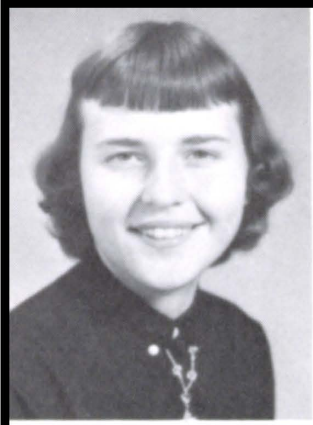
Sponsored by

L and S STEEL SUPPLY



A. Labenz

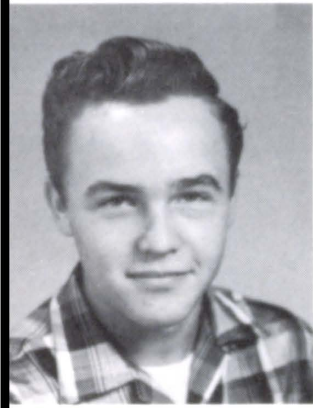




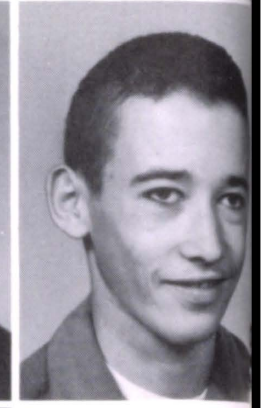
T. Langan
P. Liss



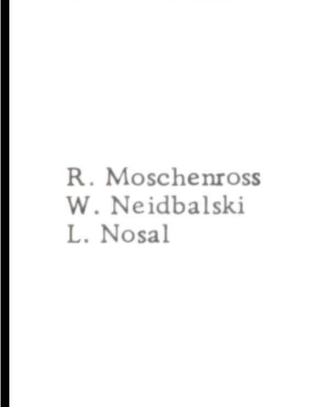
P. Mahoney
E. Markytan



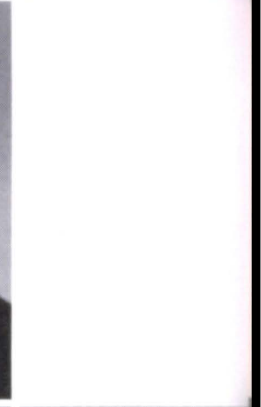
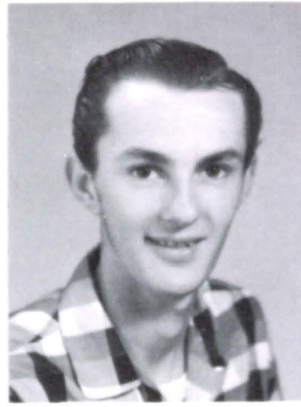
R. Micek
S. Miller



L. Mimick
R. Morgan



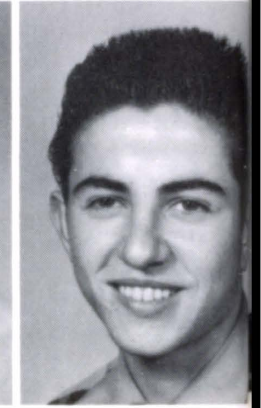
R. Moschenross
W. Neidbalski
L. Nosal



A. Oberhauser
B. Paprocki



L. Paprocki
E. Peterson



F. Pfaff

Juniors

Sponsored by
Dr. PEPPER BOTTLING CO.

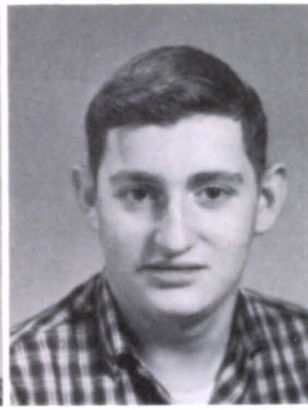




R. Podraza
C. Preston



R. Reuss
J. Rossie



J. Scharff
J. Schmit



J. Shemek
W. Schuele



K. Sokol
K. Soulliere
F. Staroscik



A. Starostka
R. Steiner



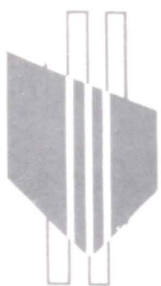
J. Thalken
E. Zywiec



J. Feilmeir

Juniors

Sponsored by
ALEXAND'S FURNITURE CO.





Y. Adamy

J. Badstieber

J. Bator

B. Bogus



Sophomores



K. Borer



M. Braun



R. Costello



C. Cronin



D. Delarme



L. Euteneuer



K. Fouts



L. Gablenz

Sponsored by PAWNEE BAR

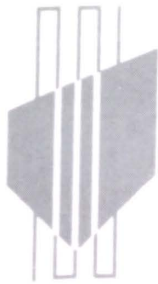
J. Gdowski

M. German

R. Golonka

B. Gonka





P. Gregorius

V. Hembd

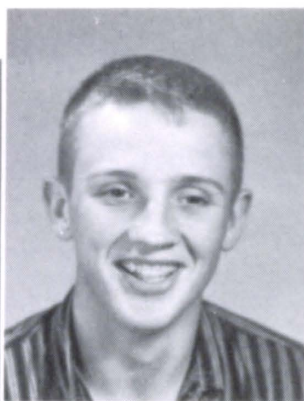
M. Henggeler

D. Hilger

Class of 1960



J. Hilger



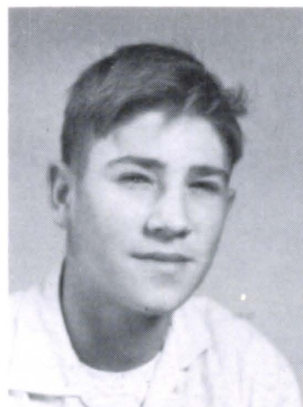
J. Huhman



V. Jakub



M. Jarecki



D. Kampovitz



M. Kaus



M. Kavanaugh



W. Keating

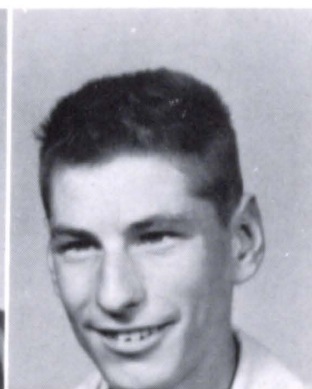
Sponsored by DANIEL STUDIO

M. Kretz

R. Kudron

D. Lassek

J. Legenza





J. Liss



J. Litjen

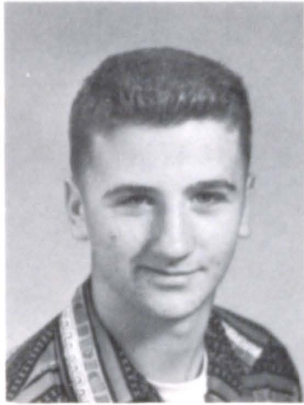


W. McAuliff



J. Marr

Sophomores



D. Melcher



S. Meyer



A. Micek



R. Micek



J. Mielak



L. Minette



G. Mohrman



L. Morgan

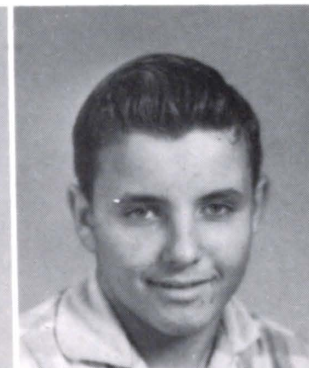
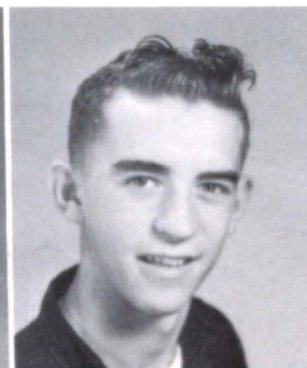
**Sponsored by
FLEICHER DRUG CO.**

D. Mostek

M. Mrzlak

J. Nosal

J. Odgaard





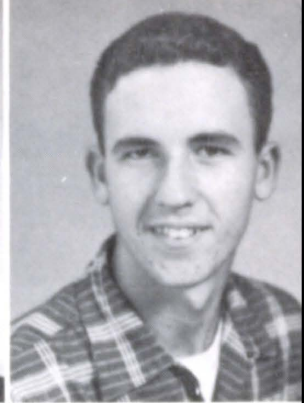
N. Peterson



J. Pillen



R. Romanek



P. Scharff

Sophomores



G. Schmid



T. Shonka



B. Sokol



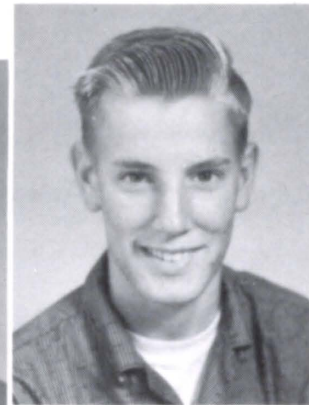
R. Stachura



L. Staroscik



C. Starostka



J. Swalek



E. Tworek

Sponsored by

BEATRICE FOOD'S CO.

J. Tylle

J. Woodworth

P. Wruble

J. Zoucha





FIRST ROW: G. Kruse, M. Messersmith, M. Bothe, J. Cregar, Y. Mimick. SECOND ROW: L. Laska, G. Langan, D. Nosal, F. Johnson. THIRD ROW: G. Hilger, J. Michaelsen, R. Storz, E. Siemek, M. Dischner.

Freshmen



FIRST ROW: F. Luetkenhaus, L. Tworek, C. Ebel, G. Soulliere. SECOND ROW: M. Kaus, J. Kuntz, R. Kuta, L. Paprocki, P. Kosinski. THIRD ROW: G. Hilger, D. Ritter, R. Koczor, C. Stone, R. Liebig.

Sponsored by **SOIL REMOVER**





FIRST ROW: L. Hanke, R. McCarty, L. Odgaard, M. Heiman, K. Schrier. SECOND ROW: S. Schaefer, V. Swirczek, V. Swalek, J. Meysenburg. THIRD ROW: D. Sedlacek, D. Steele, C. Briggs, J. Gaver, E. Jones.

Class of 1961



FIRST ROW: M. Jarecki, B. Obal, F. Tworek, S. Bruckner. SECOND ROW: C. Corcoran, R. Haller, K. Srb, W. Backes. THIRD ROW: C. Pfaff, J. Padroza, R. Bernt, D. Miller.

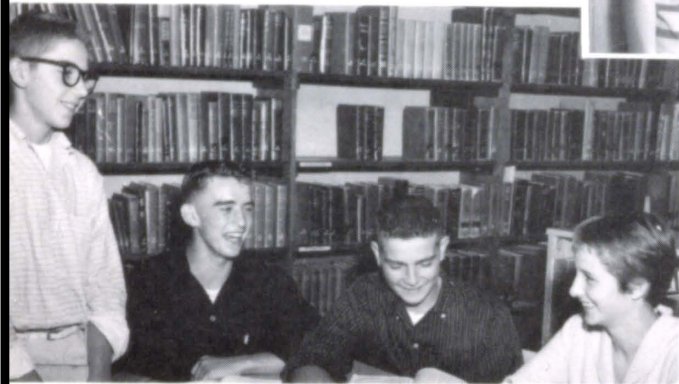
Sponsored by **SCOTT'S STORE**

Class Officers



Juniors

Treas. J. Rossie, Vice-pres. B. Bonk,
Pres. J. Thalken, Sec. T. Cadwal-
lader.



Freshmen

Pres. M. Jarecki, Sec.-treas.
C. Ebel, Vice-pres. J. Michaelson.

Sophomores

Treas. J. Bator, Pres. J. Nosal,
Vice-pres. J. Liss, Sec. J. Marr.

Home Room Officers

FIRST ROW: L. Hanke, E. Obal, M. Messersmith, R. McCarty. SECOND ROW: M. German,
M. Mrzlak, P. Gregorius, B. Bogus, T. Shonka, D. Hilger. THIRD ROW: R. Jonas, J. Jarecki,
L. Kosiba, W. Schuele, L. Mimick. FOURTH ROW: F. Krzycki, D. Gablenz.



Junior High



FIRST ROW: Miss M. Curry, R. Legenza, J. Sebek, P. Corcoran, M. Borer, J. Miller, S. Dush, M. Mrzlak, J. Sokol, R. Gablenz, K. Wennehamp, Sister M. Alberta. SECOND ROW: D. Petermann, J. Keuter, T. Pariso, D. Minette, J. Koci, C. Zerr, D. Thraen, D. Galley, J. Albright, S. Kosch, D. Prokupek. THIRD ROW: J. Mitera, D. Sleddens, N. Wemhoff, P. Murphy, J. Ramaekers, C. Shemek, E. Braun, M. Novicki, C. Moersen, T. Frazer. FOURTH ROW: K. Kuta, C. Kowalski, M. Langan, J. Gregorius, C. Pieters, M. Miller, K. Jaworski, M. Morgan, S. Pfeifer, C. Olsufka, C. Wachhotlz.

Sponsored by WILLIAMS BROS. CO.

FIRST ROW: M. Demko, P. Niels, T. Obal, T. Byrnes, J. Tooley, B. Shonka, P. Thraen, A. Kuta, D. Wheeler, A. Odgaard, J. Frazer, Sister M. Barbara. SECOND ROW: B. Prokupek, A. Herrink, S. Staroscik, R. Schaecher, J. Shrier, J. Pfeifer, J. Thraen, A. Maguire, B. Micek, M. Kuta. THIRD ROW: J. Miller, E. Miller, G. Sliva, L. Eckholt, L. Nicholite, G. Jones, D. Herrod, M. Altmanshofer, K. Micek. FOURTH ROW: R. Foltz, J. Micek, S. Heiser, A. Herink, R. Slusarski, J. Torczon, L. Broch, D. Kroenke, B. Boesch, G. Mielak, G. Schmit.





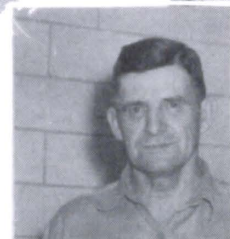
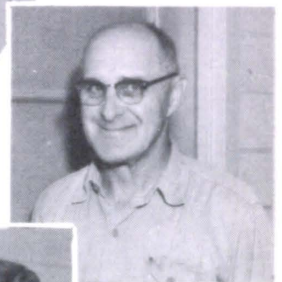
OUR CAFETERIA WORKERS: H. Sebek, C. Pfeifer, H. Scharawath, H. Sokol, H. Shefcyk, M. Tucek, V. Triba, L. Micek. . .



serving hundreds of students.

OUR CUSTODIANS:

A. Fiek



V. Wieser

OUR NURSES: E. Markhofer, H. Shadle, A. Smith, B. Thomas.



Sponsored by
COLUMBUS MOTORS



ORGANIZATIONS



Student Council Officers



Vice-pres. K. Kuta, Pres. C. Wemhoff, Sec. J. Bator, Treas. L. Mimick.



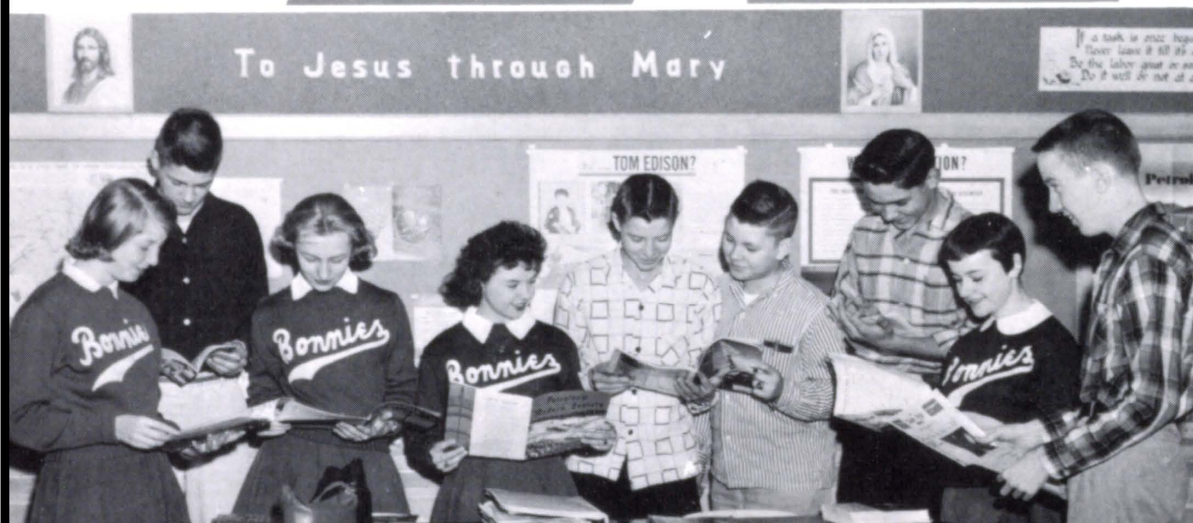
Members of Student Council

FIRST ROW: J. Haney, M. Mrzlak, M. Jarecki, K. Kuta, Sister M. Rayneria, C. Wemhoff, L. Mimick, J. Bator, J. Tylle, D. Shefcyk, M. Micek. SECOND ROW: B. McCarty, L. Hanke, M. Wozny, J. Thalken, R. Augustine, P. Langan, P. Tooley, B. Bogus, J. Nosal, D. Gablenz, J. Sebek.

ASSEMBLY COMMITTEE: M. Bothe, D. Altmanshofer, M. Mrzlak, J. Sebek, J. Bothe, F. Johnson, R. Augustine, J. Meysenburg, P. Keating.



Hall monitor, R. Augustine, signs pass for H. Galley.



To Jesus through Mary

TOM EDISON?

EDISON?

If a task is great begin
 by doing it
 Do it well do not do it
 at all

Petrol

Honor Society Officers



Vice Pres. Don Kaminski, Pres. Bill Reuss, Treas. Gaylord Kafka, Sec. Clures Hobbensiefken.



HONOR SOCIETY MEMBERS

FIRST ROW: P. Mahoney, J. Haney, L. Mimick, C. Hobbensiefken, M. Wozny, K. Shonka, A. Meysenburg. SECOND ROW: D. Kaminski, A. Kusek, G. Kafka, C. Wemhoff, P. Tooley, P. Langan, J. Scharff, J. Schmidt, W. Reuss, J. Kniefel, (not pictured) R. Augustine.

OUR MOTTO IS
"Light is the Sumbol
of Truth" C. Wem-
hoff, K. Shonka.



SPEAKERS FOR INDUCTION: M. Wozny, C. Hobbensiefken, D. Kaminski, W. Reuss.





TYPISTS: K. Kurtenbach, J. Sliva,
E. Stachura.

PROOF READERS: M. Minette, M. Wozny, J. Burzynski, C. Wemhoff.



CIRCULATION MANAGERS: P. Langan, J. Bothe, M. Micek.

AD SELLERS: M. Minette, G. Cockson, M. Micek, J. Burzynski, J. Kneifel, K. Shonka, B. Coles, A. Meysenburg, H. Galley, P. Langan, E. Blahak, C. Wemhoff, M. Wozny, J. Bothe.



Sponsored by
FLOYD'S
STANDARD SERVICE



The Bona Venture

Editor Judie Bator

Co-editor Richard Sansoni

Business Manager Paul Langan

Circulation Managers
Maureen Micek
JoAnn Bothe

Typists Janet Sliva
Kathleen Kurtenback
Eva Stachura

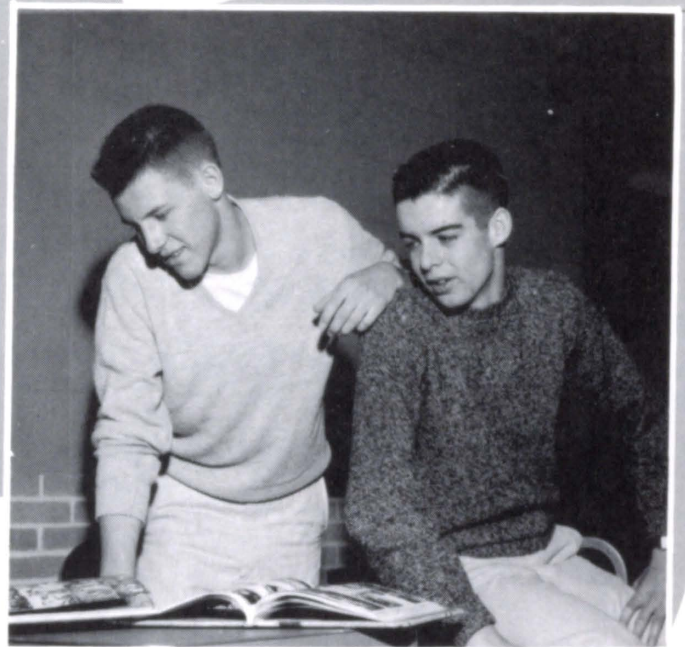
Art Editors Judy Tylle
Dolores Shefcyk

Sports Editors Patrick Tooley
Donald Kaminski

Proof Readers Jane Burzynski
Mary Ellen Minette
Mary Kay Wozny
Carroll Wemhoff



CO-EDITOR and EDITOR: Dick Sansoni and Judie Bator make plans for the 1958 annual.



SPORTS EDITORS: Don Kaminski and Pat Tooley



ARTISTS: Judy Tylle and Dolores Shefcyk

Sponsored by
CENTRAL ELECTRIC & GAS CO.

Venture



EDITORS: J. Bator, D. Shefcyk, K. Kurtenbach, Sister Cyril, R. Augustine, G. Cockson, M. Wozny, A. Meysenburg.



CO-EDITORS: K. Shonka, M. Minette, K. Kuta, J. Haney, J. Scharff, K. Huhman, L. Mimick, P. Badstieber.

REPORTERS: P. Keating, E. Stachura, M. Mrzlak, C. Cronin, C. Ebel, J. Odgaard, P. Gregorius, W. McAuliff.





FRONT ROW: C. Pfaff, L. Minette, R. Morgan, J. Bothe, R. Sansoni, L. Staroscik, J. Odgaard, G. Soulliere, L. Odgaard, F. Johnson. SECOND ROW: J. Gregorius, L. Euteneur, R. Romanek, J. Kniefel, J. Sharff, G. Haller, D. Miller, D. Gablenz, E. Siemek. THIRD ROW: D. Shmidt, R. Krzycki, N. Wheeler, P. Sharff, D. Melcher, B. McAuliff, R. Reuss. FOURTH ROW: P. Keating, D. Hilger, C. Wemhoff, D. Altmanshofer, P. Tooley, A. Kusek.



Student Organists

B. Coles, M. Mrzlak.

Servers

Choir

FRONT ROW: A. Meysenburg, C. Ebel, K. Shonka, M. Wozny, P. Gregorius, L. Gablenz, J. Meysengurg, H. Neils, K. Shrier, P. Kosinski. SECOND ROW: S. Shaeffer, M. Heimen, R. Haller, M. Minette, J. Haney, K. Kuta, M. German, J. Lagenza, J. Mielak, M. Kaus, C. Briggs. THIRD ROW: Sister Bernardis, L. Markhofer, C. Johnson, P. Mahoney, R. Moshenross, J. Pillen, V. Hembd, C. Cronnin, M. Kavanaugh, D. Czuba.

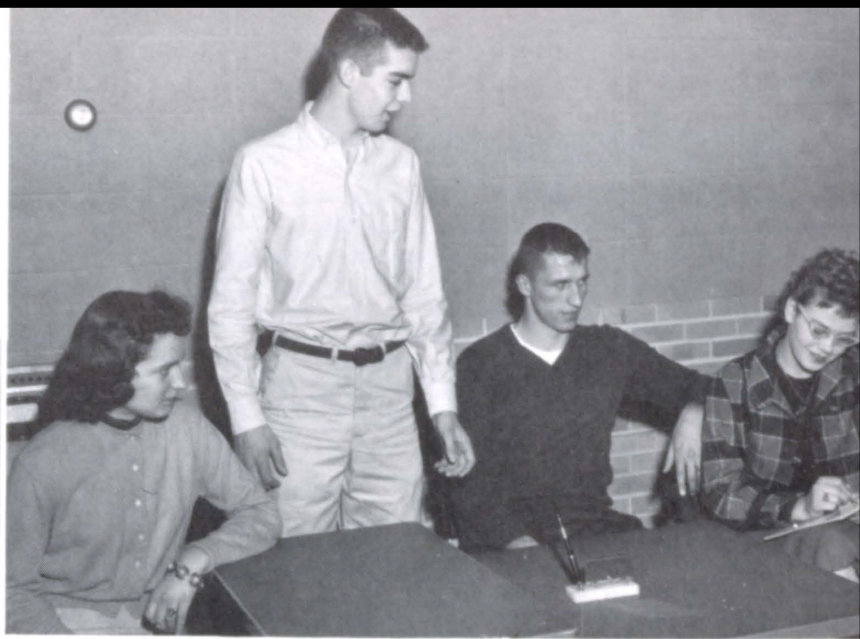


May Crowning



GENERAL OFFICERS

Vice Prefect-J. Tylle, Prefect-P. Tooley, Treas.
T. Kroenke, Sec.-J. Bator.



ST. MARIA GORETTI UNIT

Treas.-R. Romanek, Prefect-J. Odgaard, Vice Prefect-M. Mrzlak,
Sec.-J. Woolworth.

Sodality

**Sponsored by
SOCONY MOBIL OIL CO.
L. J. Fox-Agent**

ST. DOMINIC SAVIO UNIT

Treas.-A. Brewer, Prefect-D. Kopetsky, Vice Prefect-C.
Moersen, Sec.-S. Kosch.



ADORERS OF THE BL. SACRAMENT
J. Litchen, D. Roddy, D. Kopetsky, L.
Ruppercht.



FIRST ROW: C. Cockson, D. Shefcyk, J. Woodworth. SECOND ROW: P. Badstieber, P. Keating, S. Messersmith, L. Markhofer, K. Fouts, K. Shonka. THIRD ROW: F. Pfaff, P. Gregorius, C. Johnson, L. Mimick, Fr. Kenneth, M. Micek, L. Nosal. FOURTH ROW: R. Krzycki, A. Staroscik, J. Schmidt.

Pep Band



Sponsored by
McKOWN FUNERAL HOME



FIRST ROW: P. Scharff, R. Romanek, G. Haller. SECOND ROW: D. Mostek, J. Litchen, B. Coles, G. Kafka, A. Kusek, J. Scharff. THIRD ROW: C. Backes, J. Mielak, C. Wemhoff, J. Kniefel, J. Odgaard. FOURTH ROW: B. Reuss, J. VanAckeran, Director.

CLARINET DUO: D. Shefcyk,
G. Cockson.



Band Officers

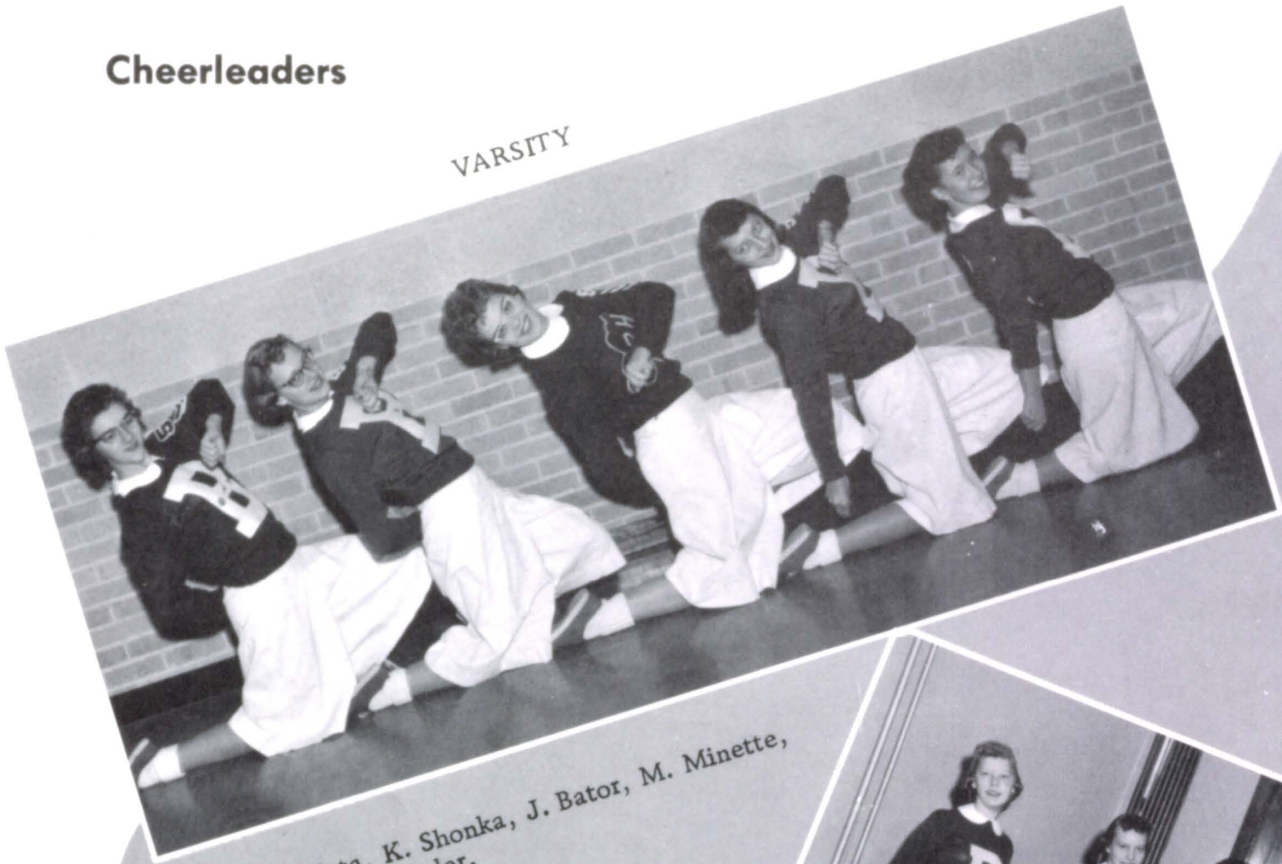


Directors Ass't. M. Tusek, Pres. M. Micek, Sec.-
Treas. G. Cockson, Vice Pres. G. Kafka.

Sponsored by
IRRIGATION PUMP CO.

Cheerleaders

VARSIITY



K. Kuta, K. Shonka, J. Bator, M. Minette,
T. Cadwallader.

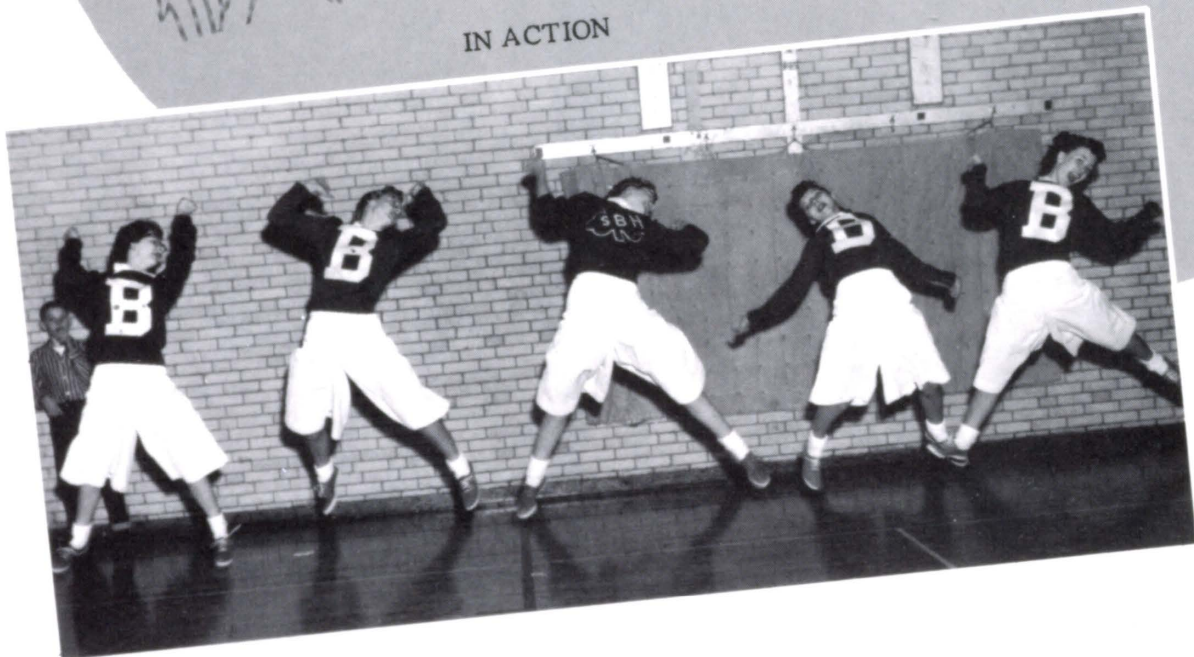
RESERVES



V. Hembd, L. Gablenz, K. Fouts, J. Pillen, C. Cronin



IN ACTION



Sponsored by
BECHER, HOCKENBERGER & CHAMBERS

Pep Club



OFFICERS: Sec. K. Sokol, Pres. D. Shefcyk, Vice-Pres. J. Bothe, Treas. A. Meysenburg, Sponsor, Sister M. Oscaria.

IN ACTION



SELLING POM POMS: J. Haney, M. Hilger, T. Langan.



Sponsored by
NIELSEN CHEVROLET CO.

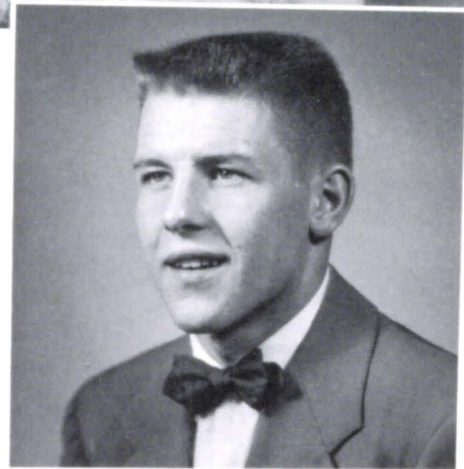
Queen Judy



Homecoming



FIRST ROW: HOMECOMING ROYALTY AND ATTENDANTS: Mary Ellen Minette, Judy Tylle, Don Kaminski, Delores Shefcyk, SECOND ROW: Kathi Shonka, Dick Sansoni, Pat Tooley, Tony Kroenke, George Arasmith, Maureen Micek.

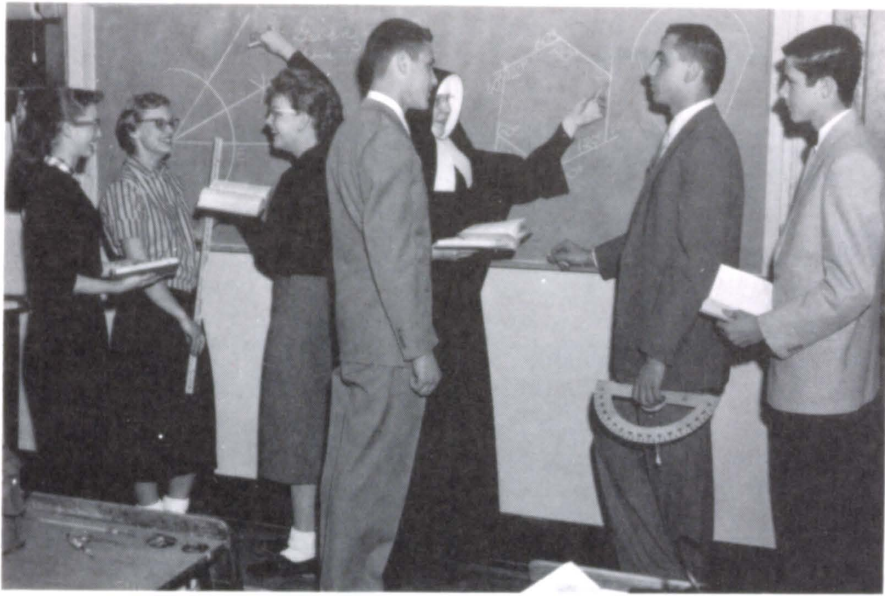


**Sponsored by
CENTRAL NATIONAL BANK**

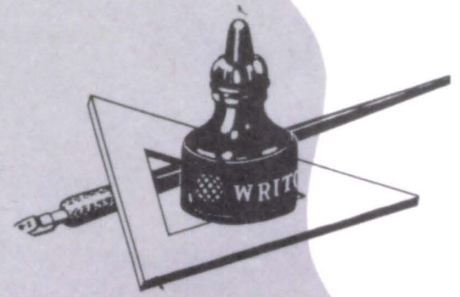
King Don

After the Game





GEOMETRY



Classes . . .

STUDY HALL



LATIN



ENGLISH



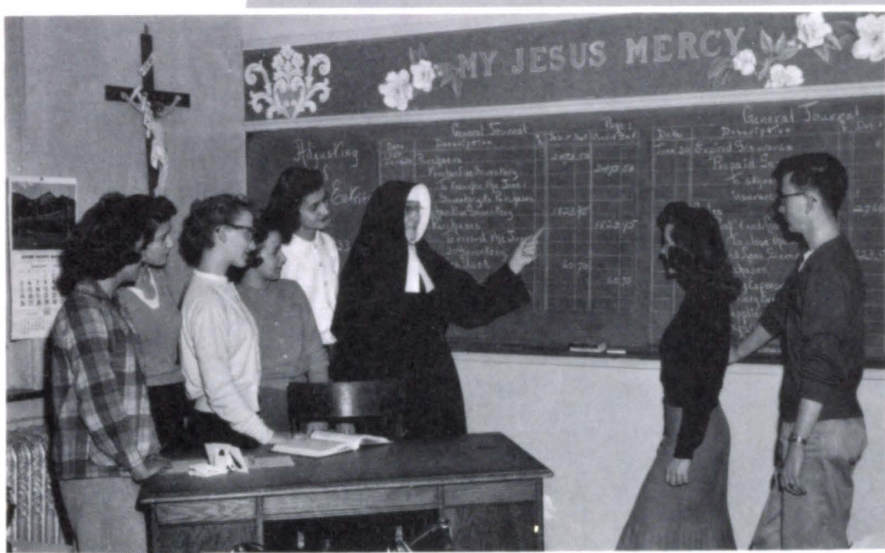
Sponsored by
DOWD OIL CO.



CHEMISTRY

In Progress

BOOKKEEPING



SHOP



ENGLISH

Sponsored by
BEHLEN MFG.



GIRL'S STATE: Judie Bator

DEMOCRACY CONTEST: Judie Bator, Mary Kay Wozny, Carol Preston, Paul Langan, Gaylord Kafka, Elaine Blahak.



UNITED NATIONS DEBATE: Kathryn Sokol, Joyce Haney, Kathryn Kuta, Mary Kay Wozny, Judie Bator, Mary Jo Dush, Clures Hobbensiefken, Phyllis Mahoney.

BOY'S STATE: Pat Tooley.



Sponsored by
COLUMBUS GRAIN CO. INC.
 We truly appreciate every opportunity to
 serve you.



OPTIMIST SPEECH CONTEST. . .FIRST ROW: L. Laska, M. Henggeler, D. Hilger, L. Odgaard, G. Langan, B. McCarty. SECOND ROW: R. Liebig, C. Pfaff, C. Corcoran, R. Gumm, J. Michael- sen. STANDING: L. Minette.



STATE MUSIC CONVENTION
K. Shonka, D. Shefcyk, J. Haney.



CONSTITUTION CONTEST
L. Mimick, P. Langan, C. Preston.



COUNTY GOVERNMENT OFFICIALS . . . J. Bothe, T. Kroenke, J. Bator, M. Minette, C. Wemhoff, P. Tooley, D. Sansoni, K. Shonka, J. Tylle, L. Hamling, D. Shefcyk, C. Hobbensiefken.

Sponsored by
RECTOR HIRSCHBRUNNER & HANKE



Fr. Timothy and Y.C. Officers . . . P. Langan, Pres.; K. Shonka, Sec.; J. Nosal, Treas.
Not Pictured: G. Cockson, Vice-Pres.

Our Youth Club



Mrs. Kusek . . . a faithful supporter of the Youth Club



Y.C. MEMBERS . . . FIRST ROW: J. Mielak, P. Badstieber, J. Haney, A. Meysenburg, J. Bothe, J. Meysenburg, J. Burzynski. SECOND ROW: M. Wozny, J. Feilmeier, L. Nosal, J. Woodworth, B. Paprocki, K. Shonka, L. Mimick, P. Gregorius, M. Mrzlak. THIRD ROW: G. Soulliere, D. Sansoni, D. Podraza, J. Thalken, J. Gregorius, D. Melcher, J. Bothe, T. Shonka, C. Stone, L. Odgaard. FOURTH ROW: J. Michaelson, P. Langan, B. Koczor, D. Altmanshofer, L. Kosiba, A. Kusek, R. Krzycki, G. Haller, J. Nosal.

Dancing for fun!



Sponsored by
MIESSLER DRUG STORE



L. Wolever, J. Bator, G. Kafka, G. Cockson, P. Langan, Queen J. Bothe, King C. Wemhoff, R. Augustine, D. Kosiba, A. Jarecki, J. Sebek, J. Shonka.

King and Queen of Hearts



CROWNBEARERS . . . J. Shonka, L. Wolever.



King Carroll crowns Queen JoAnn.

Royalty leads the first dance.



Class Play of 1958



"Come on, ya lazy critter!"
W. Reuss, D. Shefcyk,
J. Bator, A. Meysenburg,
G. Braun.

"Hello, hello! Say
"hello," Willy!"
W. Reuss, R. Augustine,
M. Micek, K. Shonka,
G. Braun, A. Meysenburg.



"Yer a mighty handsome woman, Min."
M. Micek, A. Meysenburg, G. Cockson,
P. Tooley, D. Shefcyk.

"Oh, Willy, be ya hurt?"
A. Meysenburg, R. Augustine.



"Now, Calm down, Rosie Belle."
R. Augustine, J. Bator, W. Reuss, A.
Meysenburg, G. Cockson.

"A Feudin' Over Yonder"



"Ya cain't make me wear shoes!"
G. Braun, K. Shonka, W. Reuss, M. Micek, J. Bator, A. Meysenburg.

"Yahoo! Yahoo!"

P. Langan, C. Wemhoff, G. Kafka, S. Messersmith, A. Jarecki, G. Braun, R. Augustine, K. Shonka, M. Sliva, J. Smith, P. Sledden, G. Cockson, J. Burzynski, M. Minette, M. Pensick, N. Kretz, E. Blahak, M. Micek, J. Smith, J. Bator, N. Wheeler.



"First, we're goin' to have some dancin'!"
G. Kafka, S. Messersmith, L. Markofer, M. Sliva, J. Smith, M. Hilger, J. Sliva, M. Pensick, P. Sleddens, J. Burzynski, J. Smith.

"Just warsh whut shows."

A. Meysenburg, J. Bator, D. Shefcyk.



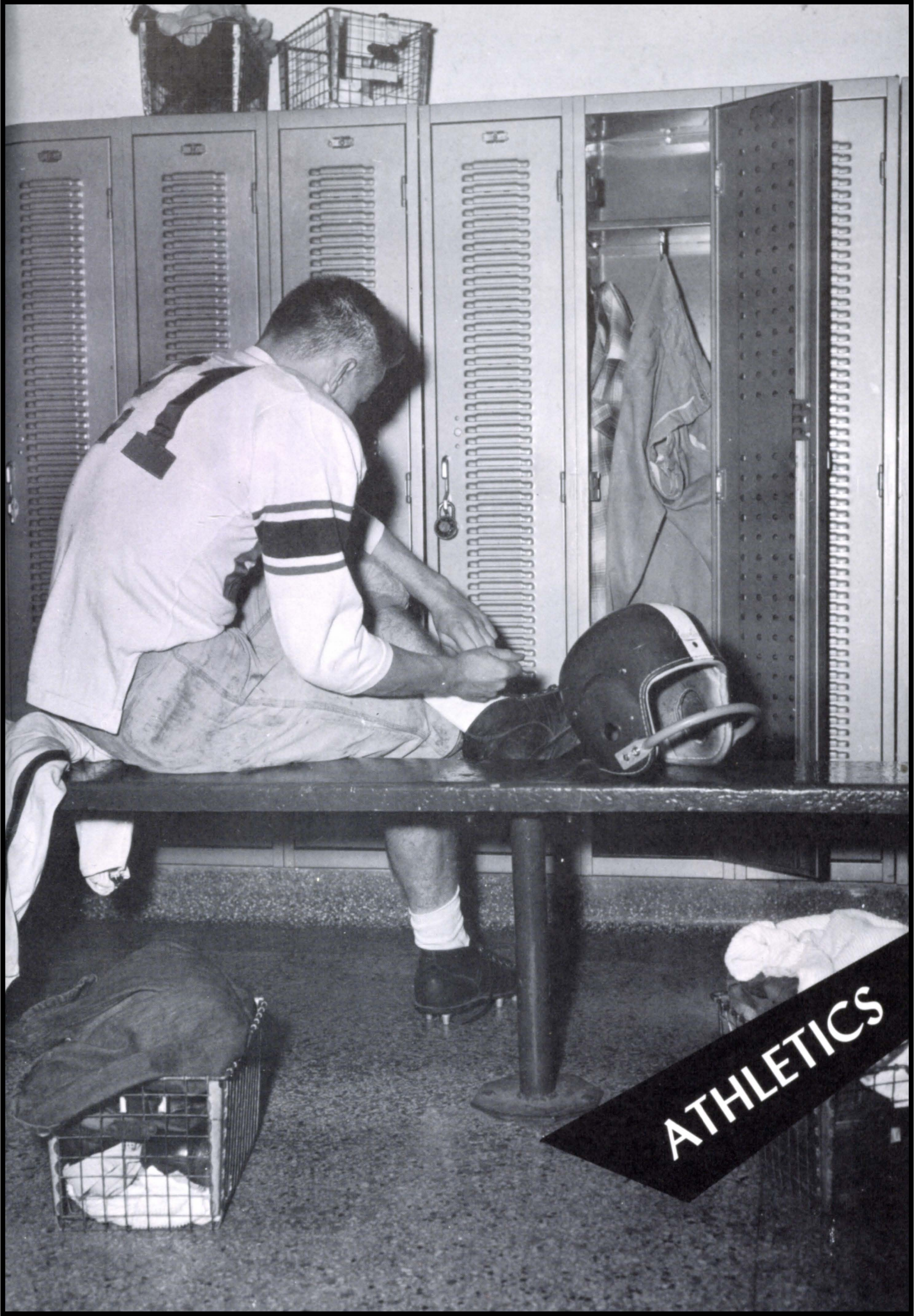
"What air ya doin out thar?"
N. Wheeler, A. Meysenburg.



**Sponsored by
RENO BAR**

Fads and Memories of "58"





ATHLETICS

Lincoln Pius
 Homecoming
 foe for Irish

Shamrocks in
 triumph
 Omahan

Local teams
 on road
 this week

Games This Week
 Thursday
 St. Bonaventure
 Cecilia.
 Colum
 Hast
 opposi
 in thi
 St.
 straig
 on the
 at Ha
 High,
 Islan
 event
 ern I
 Fri
 is a
 erers
 the Big
 Dell Mil
 played fin
 Island in a
 have to be
 against an in
 This will be
 game for Ha
 with a 19-12 w
 then bowed to
 0-6. Last week, the T
 up with their best p
 to date by drubbing Ne
 31-0.
 Sparked by Don Pe
 January, Jack Osborne
 back Terry Hunter, Ha
 ed up 325 yards rushing
 er 52 yards in the air. C
 lied two touchdowns on
 eg.
 St. Bonaventure, bike, senior end, to the right half
 week by Seward Conc
 back spot. Jim Thalken, who has
 will be going up ag

By RAY GATTERMEYER
 Bonaventure, playing inspir- While Lincoln Pius never came
 football before a Homecoming up with a serious threat except for
 ed, battled heavily-favored Lin-the touchdown march, the Sham-
 Pius X to a 6-6 tie last night rocks were knocking on the door
 Pawnee Park Memorial Stad-several times but couldn't quite
 muster a payoff punch.
 Scrimmaging from their 27-yard
 the opening kickoff of the
 Bonaventure drove
 for four first
 ball on the Lin-
 five-yard offside
 ythm out of the
 Although Lincoln
 ulti three plays
 team wound up
 4.
 Next
 another threat
 ents of the first
 ek returned a
 the Lincoln 34.
 Francis Krzycki,
 Kusek account-
 but the Pius
 the fourth down
 halftime gun,
 scamper high-
 first down on the
 line, but Mc-
 the bid by inter-
 the next play.
 as were still threa-
 the game out of the
 in the final gun sounded.
 at Tooley had just completed a
 pass to Arasmith on the Lincoln 20
 as time ran out.
 St. Bonaventure has another im-
 portant test coming up here next

By RAY GATTERMEYER
 big and bruising Omaha Cath-
 team came from behind in
 second half to defeat St. Bon-
 nature, 18-12, in a hard-hitting
 e Friday night at Pawnee
 Memorial Stadium.
 e clubs battled on
 terms the first
 h Chuck Wole
 talizing on
 a 6-0 lea
 advantage in
 e down th
 mission.
 en Shaffe
 standout
 d wall, v
 quarte
 ch featur
 Okley C
 back Fr
 Shamr
 rge Ar
 line p
 Kusek
 nature
 ardinal
 quarter
 ards to
 zycki an
 14, and a
 Omahans n
 l-yard line.
 ycki plunged
 led, 6-0, with
 nging in the half.
 for the point failed.
 arly in the third period, Cath-
 recovered a fumble on St.
 adventure's 45 and the Omahans
 e rapidly downfield aided by

By RAY GATTERMEYER
 important test coming up here next

● Sport Shorts
 By PAUL ERNST
 Here and there... Coach Chuck
 Wolever's St. Bonaventure Sham-
 rocks really came up with a well
 game against the strong
 Pius X. In gaining a 6-6
 Lincoln crew, the Bon-
 a large homecom-
 invaders were fa-
 with the contest
 Irish who took com-
 everything but the
 front wall was es-
 throwing the visit-
 losses and the
 s came in for their
 It was a wonder-
 the Bonnies as they
 draight. This game
 on their feet and
 Holy Name here
 Coach Wolever
 last night's game
 e going to play
 Well, Wolever
 spect and the boys
 al improved over
 against at David
 Coach Dell
 some had news Fri-
 it was learned Bill
 junior guard, has a
 er injury. Krumland, who
 as been a big factor in the suc-
 cess of the CHS team this year is
 a doubtful starter against Norfolk.
 Coach Miller also reports 56
 Ondracek, hard working sopho-
 more, is out with a broken wrist.
 Norfolk Columbus opponent

By RAY GATTERMEYER
 important test coming up here next

● Sport Shorts
 By PAUL ERNST
 Here and there... Coach Chuck
 Wolever's St. Bonaventure Sham-
 rocks really came up with a well
 game against the strong
 Pius X. In gaining a 6-6
 Lincoln crew, the Bon-
 a large homecom-
 invaders were fa-
 with the contest
 Irish who took com-
 everything but the
 front wall was es-
 throwing the visit-
 losses and the
 s came in for their
 It was a wonder-
 the Bonnies as they
 draight. This game
 on their feet and
 Holy Name here
 Coach Wolever
 last night's game
 e going to play
 Well, Wolever
 spect and the boys
 al improved over
 against at David
 Coach Dell
 some had news Fri-
 it was learned Bill
 junior guard, has a
 er injury. Krumland, who
 as been a big factor in the suc-
 cess of the CHS team this year is
 a doubtful starter against Norfolk.
 Coach Miller also reports 56
 Ondracek, hard working sopho-
 more, is out with a broken wrist.
 Norfolk Columbus opponent



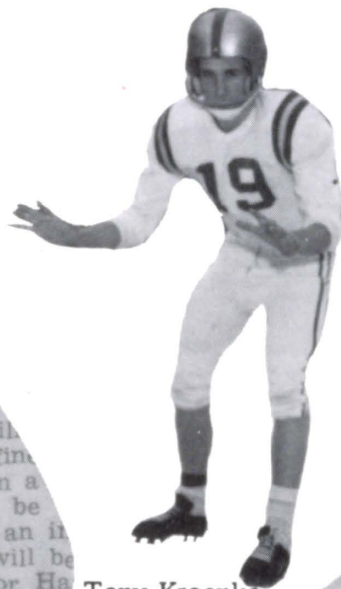
Carroll Wemhoff
Guard



Dick Sansoni
Guard



Don Kaminski
Center



Tony Kroenke
End

asses net
3-6 wi

Judy Tylle, Don Kaminski Irish Homecoming Royals



Dale Hanke
Halfback



Pat Tooley
Quarterback



Gaylord Kafka
Quarterback



Paul Langan
Tackle

in a greeting to the alumni to appropriate music of "Hail, the Gang's All Here."

The came the "HC" homecoming formation and playing of school song, and the program wound up with "Our Boys Shine Tonight."

Following the game, Judy Tylle and Don Kaminski reigned at the annual Homecoming dance held in the St. Bonaventure social hall. Alumni of the school were invited to join the students in the festivities.

The outcome of the game was so satisfying to Shamrock fans the Green and White came up with a 6-6 tie against a favored...

Holy Name is foe tonight for Shamrock

Crisp, clear football weather predicted tonight as Omaha Holy Name and St. Bonaventure clash on the Pawnee Park gridiron. Opening kickoff will be at 7:30, and a large crowd is anticipated.

Holy Name may be a slight favorite in the contest, but the team shape up as very even and Shamrock hopes are high for a victory.

Coach Chuck Wolever's Irish are in good physical shape for the contest between two teams who have built up a keen rivalry of many years. Although Holy Name is favored in the overall season, it has produced many exciting moments to date indicating it may have the better chance, but the Shamrocks are stronger defensively.

Irish open grid season here tonight

The St. Bonaventure team is bringing up the curtain on their season tonight at the Memorial Stadium. Coach Chuck Wolever is set for a morning that nothing but ankle has made and that the team will be meeting of size when they are off against Friday night at Memorial Stadium. Cardinals, a Class I team, is slated for 7:30.

Pat Tooley is the star of the team. He is a "milk mopper" and has pulled the game out of the fire on two or three occasions.

Pat Tooley is the star of the team. He is a "milk mopper" and has pulled the game out of the fire on two or three occasions.

Pat Tooley is the star of the team. He is a "milk mopper" and has pulled the game out of the fire on two or three occasions.

Pat Tooley is the star of the team. He is a "milk mopper" and has pulled the game out of the fire on two or three occasions.

The St. Bonaventure team is bringing up the curtain on their season tonight at the Memorial Stadium. Coach Chuck Wolever is set for a morning that nothing but ankle has made and that the team will be meeting of size when they are off against Friday night at Memorial Stadium. Cardinals, a Class I team, is slated for 7:30.

Pat Tooley is the star of the team. He is a "milk mopper" and has pulled the game out of the fire on two or three occasions.

Pat Tooley is the star of the team. He is a "milk mopper" and has pulled the game out of the fire on two or three occasions.

Pat Tooley is the star of the team. He is a "milk mopper" and has pulled the game out of the fire on two or three occasions.

Pat Tooley is the star of the team. He is a "milk mopper" and has pulled the game out of the fire on two or three occasions.

Varsity Squad



FIRST ROW: R. Kudron, D. Hanke, J. Nosal, J. Thalken, D. Kaminski, J. Huhman, D. Melcher, D. Sansoni, L. Minette. SECOND ROW: Coach Wolever, B. Golonka, F. Krzycki, A. Kusek, C. Wemhoff, P. Tooley, P. Langan, T. Kroenke, L. Kosiba, D. Altmanshofer, G. Arasmith, J. Jarecki, J. Liss, T. Shonka.

Junior Varsity



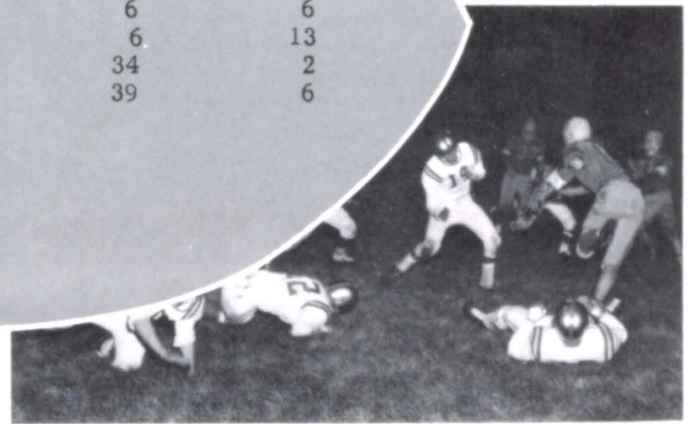
FIRST ROW: R. Kudron, B. Golonka, J. Nosal, J. Liss, J. Huhman, D. Melcher, T. Shonka, L. Minette. SECOND ROW: Coach Wolever, J. Bator, G. Langan, E. Jones, G. Haller, B. McAuliff, R. Micek, E. Siemek, L. Staroscik, D. Kampovitz, G. Soulliere.

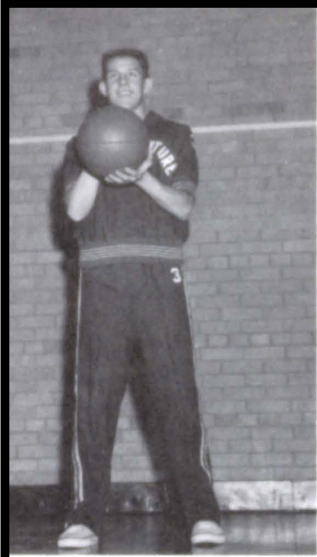
Sponsored by
LUSCHEN S. I. G. A. FOODLINER



FOOTBALL SCHEDULE

| | We | They |
|---------------------------|----|------|
| Sept. 13-Pawnee City | 26 | 0 |
| Sept. 20-Omaha Cathedral | 12 | 18 |
| Sept. 27-Seward Concordia | 0 | 13 |
| Oct. 11-St. Mary's D.C. | 0 | 23 |
| Oct. 18-Pius X, Lincoln | 6 | 6 |
| Oct. 25-Holy Name | 6 | 13 |
| Nov. 1-St. Joseph | 34 | 2 |
| Nov. 8-Gr. Island Cath. | 39 | 6 |





D. Kaminski
Senior

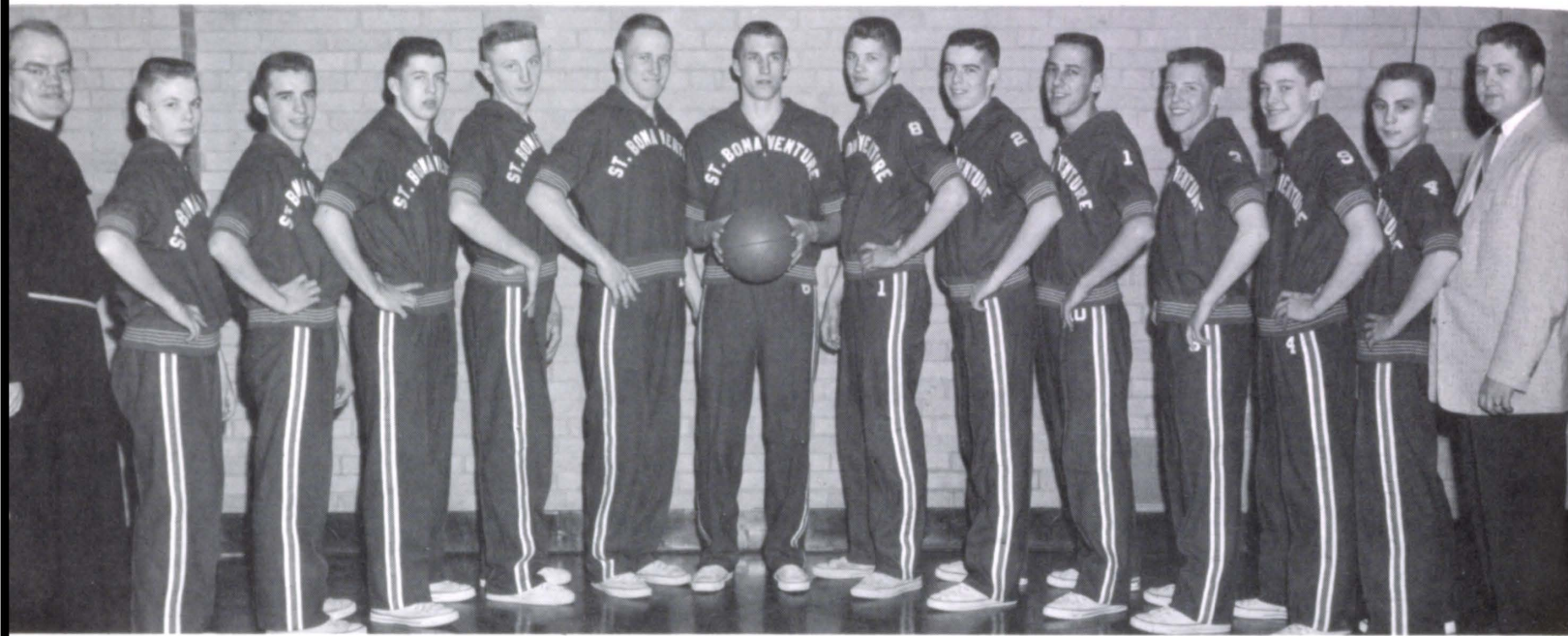


Coach Wolever



G. Arasmith
Senior

Varsity



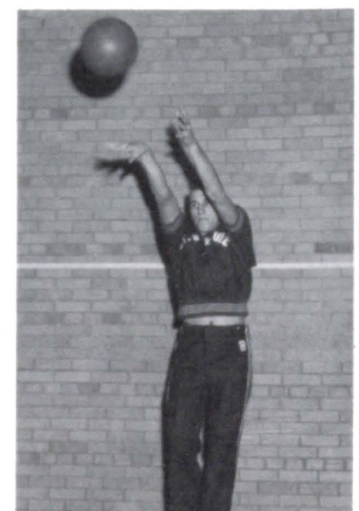
Fr. Tim, L. Staroscik, J. Nosal, A. Kusek, A. Oberhauser, L. Kosiba, A. Kroenke, D. Altmanshofer, P. Tooley, G. Arasmith, D. Kaminski, R. Golonka, D. Gablenz, C. Wolever.

**Sponsored by
ECKHOLT & MRZLAK Real Estate and Insurance**

P. Tooley
Senior

WARM UP CONFERENCE

A. Kroenke
Senior



BASKETBALL SCHEDULE

| | We | They | | We | They |
|-------------------------|----|------|-------------------------|----|------|
| Dec. 3-Madison | 36 | 65 | Jan. 14-St. Pat's | 40 | 39 |
| Dec. 6-Schuyler | 39 | 45 | Jan. 17-Howell's | 46 | 56 |
| Dec. 10-Holy Name | 24 | 48 | Jan. 31-G.I. Cath. | 63 | 52 |
| Dec. 14-Fullerton | 51 | 76 | Feb. 5-Howell's | 52 | 83 |
| Dec. 17-Blair | 49 | 42 | Feb. 6-Stanton | 60 | 68 |
| Dec. 20-Pius X, Lincoln | 24 | 57 | Feb. 11-St. Joseph's | 56 | 37 |
| Jan. 3-Wayne | 73 | 72 | Feb. 14-Seward | 38 | 68 |
| Jan. 10-University | 35 | 40 | Feb. 18-Omaha Cathedral | 37 | 56 |
| Jan. 11-St. Mary's | 33 | 49 | Feb. 21-Clarkson | 54 | 66 |

Reserves



FIRST ROW: R. Micek, W. McAuliff, J. Huhman, D. Ritter, E. Jones. SECOND ROW: Father Timothy, F. Krzycki, E. Siemek, G. Soulliere, Coach Stemper.

Father Timothy
Athletic Director

**Sponsored by
COLUMBUS FEED and SEED**

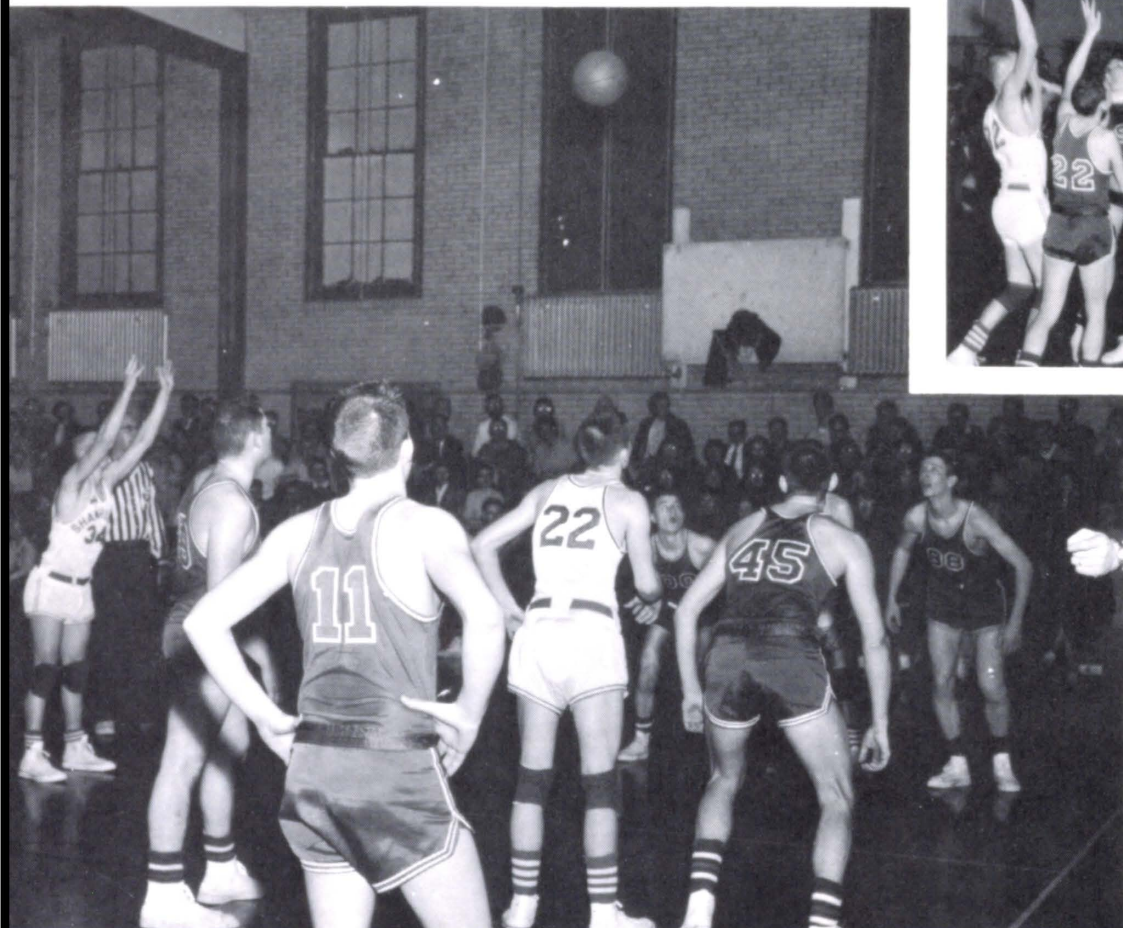
Junior High Team

FIRST ROW: T. Pariso, R. Warholoski, B. Hughs, J. Torczon, D. Kopetzky, W. Shonka. SECOND ROW: D. Herrod, J. Micek, S. Heiser, T. Burns, R. Gumm, R. Gumm, Coach Stemper.

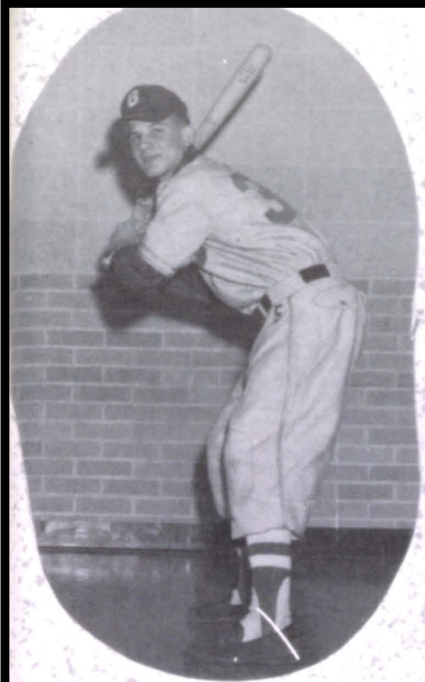




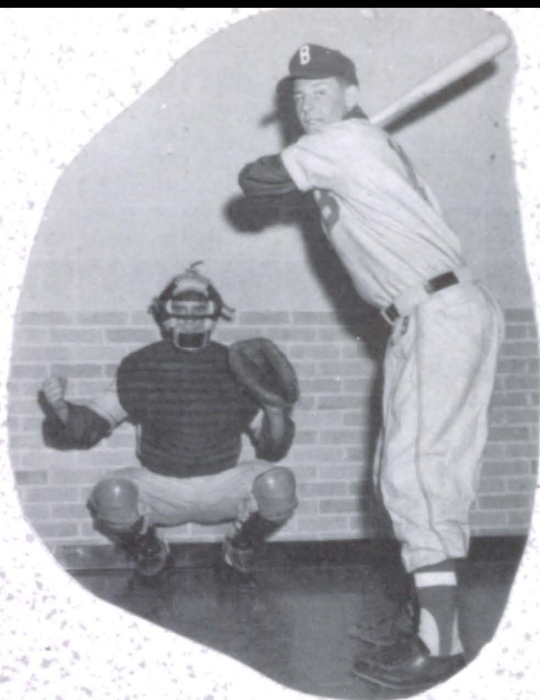
**Go
Bonnies
Go!**



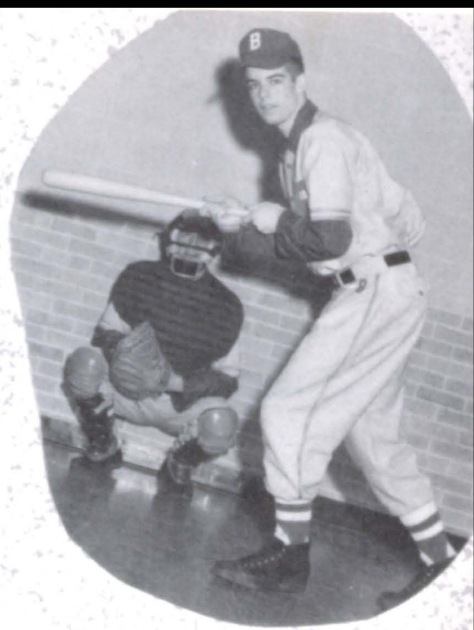
**Fight!
Fight!
Fight!**



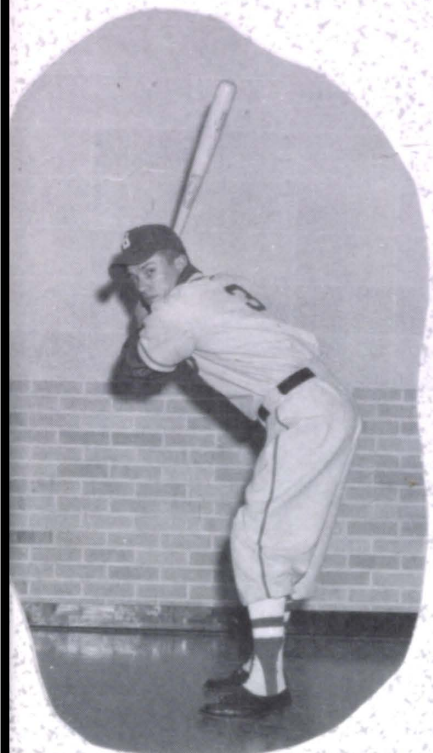
D. Sansoni



D. Kaminski



P. Tooley

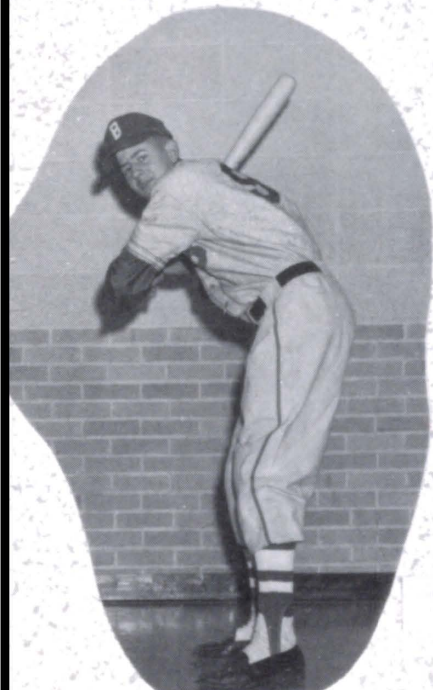


L. Hamling

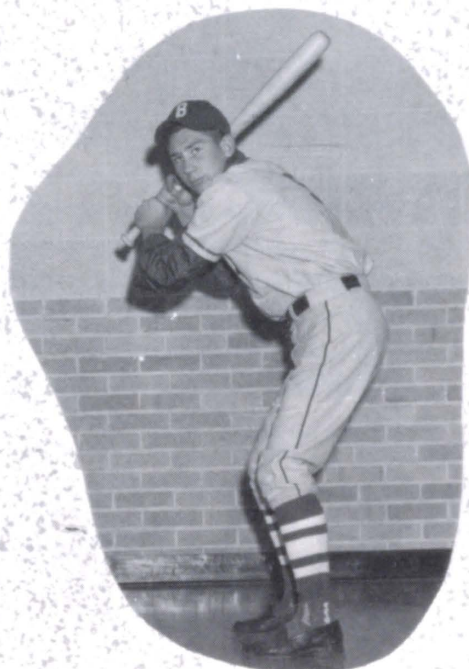


Baseball

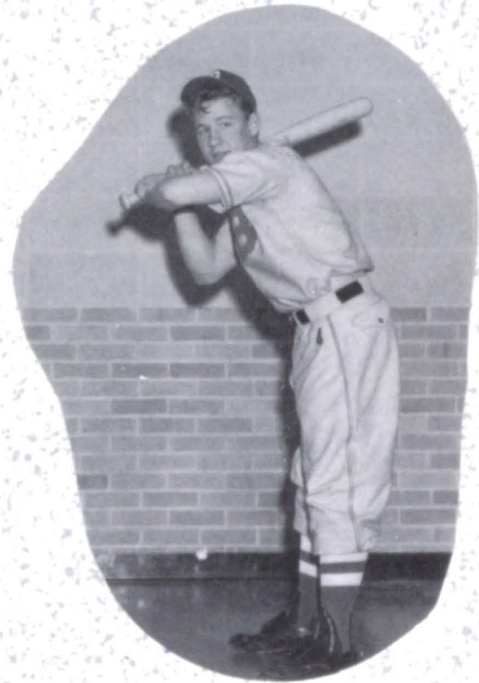
FIRST ROW: D. Gablenz, D. Kaminski, A. Kusek, Coach Wolever, P. Tooley, K. Backes, D. Sansoni. SECOND ROW: L. Staroscik, T. Shonka, J. Liss, J. Nosal, D. Hanke, L. Hamling.



K. Backes



D. Hanke

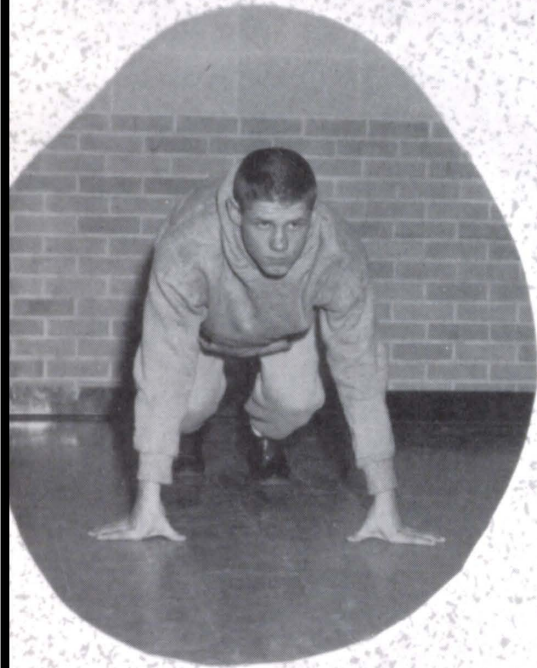


J. Kniefel

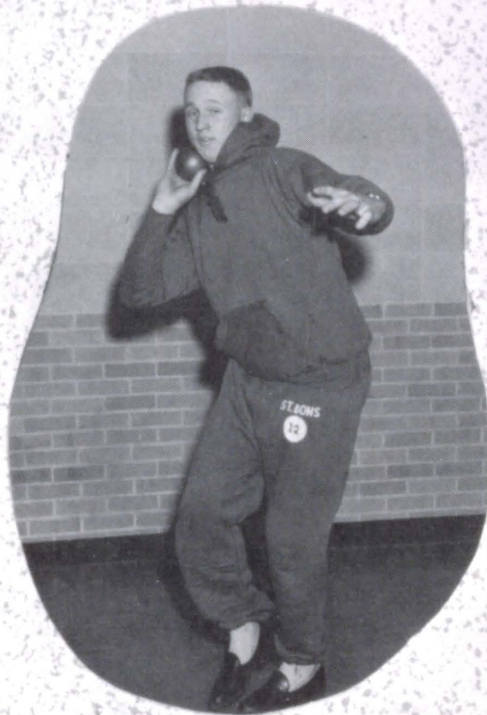
Track



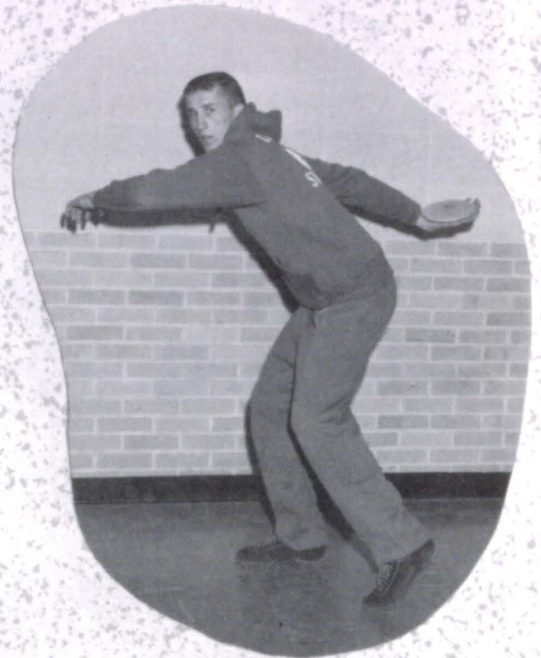
FIRST ROW: L. Paprocki, L. Odgaard, E. Jones, E. Siemek, D. Ritter, G. Haller, W. Backes, J. Bator. SECOND ROW: D. Melcher, J. Nosal, L. Staroscik, J. Liss, J. Odgaard, A. Kusek, J. Jarecki, R. Micek, G. Hilger, T. Shonka. THIRD ROW: D. Kampovitz, L. Minette, G. Soulliere, R. Gumm, R. Kudron, R. Jonas, F. Krzycki, D. Sansoni, B. Golonka. FOURTH ROW: B. McAuliff, G. Kafka, B. Scheule, J. Huhman, B. Koczor, D. Altmanshofer, T. Kroenke, D. Blahak, L. Kosiba, P. Tooley, Coach Stemper.



F. Krzycki



L. Kosiba



T. Kroenke

FRIENDS

Jay's Body Shop
Tom's Watch Repair
O'Kane & Son Produce
Mid State Motors
Northside Motors

Foreman Cash Lumber Co.
Polly Shoe Store
Prokupek Shoe Shop
Will & Baumer Candle Co. Inc.
Bordy's Clothing Store



The annual staff thanks those who have made it possible for the production of our yearbook. May God bless and reward you.

PAGE SPONSORS

Habco Mfg. Co.
 Heynen Lumber Co.
 Holys Vending Co.
 Schweser's
 Landgren Studio
 Rambour Realty Co.
 Miessler Drug Co.
 Floyd's Standard Service
 Dowd Oil Co.
 Central Natl. Bank
 Columbus Motors
 Williams Bros. Co.
 Scott's Stores
 Soil Mover
 Beatrice Foods Co.
 Fleicher Drug Co.
 Pawnee Bar
 Daniel Studio
 Alexand Furniture Co.
 Dr. Pepper Bottling Co.

L & S Steel Supply
 Montgomery Ward & Co.
 Tooley Drug Co.
 Hoessel Electric Service
 Gerhold Co.
 Dale Products Inc.
 Central Electric & Gas Co.
 Columbus Grain Co.
 Consumer's Public Power District
 Socony Mobil Oil Co.
 Rector, Hirschbrunner & Hanke
 Irrigation Pump Co.
 Behlen Mfg. Co.
 Columbus Feed & Seed
 McKown Funeral Home
 Columbus Bank
 Becher, Hockenberger & Chambers
 Eckholt & Mrzlak
 Luschen's I. G. A.
 Nielsen Chevrolet Co.

Patrons

Dr. Richard Sutton
Brenner Furniture Co.
Brodkey Jewelry Co.
Columbus Music Co.
Greyhound Cafe and News Stand
Mead Lumber Co.
Speice-Echols Boettcher
Columbus Meat Center
R & S Shoe Store
Billies Cafe
Gamble's Store
Jourdan Bakery
Miller Allied Security
Woodrick & Allen
Gloor Bakery
Froemel's Jewelry

The Bluebird
Gass Funeral Home
Columbus Sales Pavilion
Henke Machine & Mfg. Corp.
B & K Floor Crafters
Rogers Motor Co. and Farm Store
Agricultural Products Co.
Columbus Kitchen Center
Becton Dickinson & Co.
Catholic Daughters of America
Wm. C. Weidel, Builder-Carpenter
Oasis Bar
Columbus Meat Center
A Friend
Columbus Plumbing & Heating

Friends

Wunderlick's Friendly Bar
Lohr Petroleum Co.
Boulevard Lanes
Columbus Oil Co. Inc. & Hi-way Cafe
Riley Pontiac
Cletus Schall
Rogers Motor Company
C-K Planing Mill
Johansen Construction Co.
Bachtel Equipment Co.
Bordy's Store
Mihulka Brothers Service
Irene Shop
Pawnee Grocery
Jackson Dry Cleaners & Launderers
Bridal Nook Flower Shop
Anderson's Floral Co. Est. 1890
United Finance
Southside 66 Station
T. B. Hord Grain Co.
Peter Pan Baking Co.
Person's Sport Shop
Shaw Studio
William S. Sadlier Inc.
Tip Top Bar

The Lark Bar
Thomas and Barney Micek
J. C. Penny's & Co.
Columbus Theater
Potter Food Market
Jack and Jill Food Markets
Rogers Motor Company
Snow Top Drive-In
Rural Gas Corp.
Down Town Texaco Service
McOffee Jewelers
Pat's Store For Homes
Foreman Cash Lumber Co.
Jarold Shops
Overturf's Electric Motor Service
United Cleaners Hatters
Faust Standard Service
Levine Bros.
Thurston Barber Shop
Odie's Cafe
A Friend
Art Printery
Josten
B & B Bar

Senior Directory

JOSEPH ADAMY - "Joe"

Youth Center 1,2,3; Sodality 2,3,4; Typing Contest 3.

GEORGE ARASMITH - "Ears"

Football 1,2,3,4; Basketball 1,2,3,4; Track 1,2; Youth Center 1,2,3; Sodality 2,3,4.

ROBERT AUGUSTINE - "Bob"

Sodality 2,3,4; Democracy Contest 3; Home Room President 4; Junior Rotarian 4; Student Council 4; Monitor 2,4; Poetry Contest 1,2,3; Venture Co-editor 4; Youth Center 1,2,3.

KENNETH BACKES - "Kenny"

Glee 2; Baseball 1,2; Track 1,2; Basketball 1; Typing Contest 3; Youth Center 1,2,3; Poetry Contest 2; Sodality 2,3,4.

JUDITH BATOR - "Bates"

Basketball 1; Softball 1; Baseball 1; Glee 2; Choir 2; Choral Clinic 2; Bonaventure Editor 4; Horn Accompanist 3; O.A.T. Contest 3; O.G.A. Contest 3; Poetry Contest 2,3; Latin Contest 2,3; U.N. Debate 2,3; Cheerleader 2,3,4; Student Council Sec 4; Class Officer 2; County Government 3; Girl's State 3; Youth Center 2,3; Democracy Contest 3,4; Cheerleading Clinic 2,3; Class Play 4; Regents Exam 4; Monitor 4; Sodality 1,2,3,4; Sodality Officer 2,4; Venture Reporter 2; Venture Co-Editor 3; Venture Editor 4; Quill & Scroll 3,4; Assembly Committee 4; Organist 2,3,4.

ROBERT BECK - "Wormy"

Glee 2; Track 1; Typing Contest 3; Sodality 2,3,4; Class Play 4.

ELAINE BIERMAN

Softball 1,2; Glee 1,2; OAT Typing Contest 3; OGA Shorthand Contest 3; Sodality 1,2,3,4; Pep Club 1,2; Choir 1,2; Poetry Contest 2,3; Librarian 4; Christmas Play 1,2; Gregg Shorthand Contest 3.

ELAINE BLAHAK - "Blockie"

Pep Club 1,3,4; Sodality 3,4; Youth Center 1,2; Band 1; Glee 1; Band Day 1; Choral Clinic 1; Annual Staff 4; CDA Poetry Contest 1,3; Venture Reporter 1; Democracy Contest 4; OAT Typing Contest 4; Youth Club 4; Science Club 3; Science Fair 3; Monitor 4; Choir 1,3; Legion of Mary 1; Girls Softball Team 2; Girls Volleyball Team 2; Girls Basketball Team 2; Championship Volleyball Tournaments 2; Choir 2; Class Play 2.

JO ANN BOTHE - "Jo"

Band 1,2,3,4; Glee 1; Pep Club 1,2,3,4; Youth Center 1,2,3; Youth Club 4; Music Contest 1; Choral Clinic 1; Annual Staff 4; Class Officer 2; Sodality 2,3,4; Typing Contest 3; Pep Club Officer 4; County Government 3; Choir 1,2; Monitor 4; Poetry Contest 2,3; Science Club 3; Science Fair 2,3; Annual Staff 4.

GERALD BRAUN - "Jerry"

Track 1,2; Glee 2; Football 1; Student Manager 1,3; Typing Contest 3; Class Play 4; Monitor 2; Sodality 2,3,4; Youth Center 1,2.

ROBERT BURES - "Burie"

Glee 2; Sodality 3,4.

JANE BURZYNSKI - "Jay"

Glee 1; Pep Club 1,3,4; Choral Clinic 1; Choir 1,2; Sodality 2,3,4; Youth Center 1,3,4; OGA Shorthand Contest 3,4; OAT Typing Contest 3,4; Gregg Shorthand Contest 3; Annual Staff 4; Girls Basketball Team 2; Girls Softball Team 2; Girls Volleyball Team 2; Championship Volleyball Tournament 2; Class Play 2; Third Order 2,3,4.

GERALDINE COCKSON - "Gerrie"

Band 1,2,3,4; Band Day 1; District Music Contest 1,2,3,4; Band Officer 4; Pep Band 2,3,4; Pep Club 1,2,3,4; Pep Club Officer 3; Venture Staff 3,4; Sodality 2,3,4; Sodality Officer 2; Youth Center 1,2,3; Youth Club 4; Youth Club Officer 4; Democracy Contest 3; Home Room Treasurer 4; Science Club 3; Science Fair 3; Annual Staff 4; Clarinet Quartet 1,2; Clarinet Trio 3; Clarinet Duet 4; Clarinet Solo 4; Student Director 4.

BILLIE JEAN COLES - "Billie"

Glee 1,2,3; Choir 1,2,3,4; Band 1,2,3,4; Youth Center 1,2,3; Contest in Fremont 1,2,3,4; Organist 1,2,3,4; Pep Club 1,2,3,4; Sodality 1,2,3,4; Pep Band 1,2,3,4; Sax Duet 2; Band Day 2; Centennial Parade 1; Choral Clinic 1,2; Music Contest 1,2,3; Class Officer 2; Venture Reporter 1,2,3; Legion of Mary 1; Sodality Officer 3; Sax Solo 1; CDA Poetry Contest 3.

DENNIS DALY - "Denny"

Sodality 2,3,4; Band 2; Football 1,2; Track 1,2,3; Declamatory Contest 2; Monitor 2,3; Band Concert 2; Christmas Concert 2.

MARY JO DUSH

Glee 1,2; Choir 1; Pep Club 1,2,3; Choral Clinic 1; Mock United Nations 2,3; OAT Typing Contest 3; OGA Shorthand Contest 3; May Crowning 4; Sodality 2,3,4; Poetry Contest 2,3; Gregg Shorthand Contest 3; Monitor 4; Latin Contest 1,2,3.

HELEN ANN GALLEY

Glee 1; Choir 1,2; Pep Club 1,2,3,4; Youth Center 1,2,3; OAT Typing Contest 3; Choral Clinic 1; Contest in Fremont 1; Sodality 2,3,4; Legion of Mary 1; Poetry Contest 2; Youth Club 4; Science Fair 2,3.

LEROY HAMLING

O'Neil Music Clinic 1,2; Basketball 1,2,3; Baseball 3; County Government 3; Junior Rotarian 4.

DALE HANKE - "Chief"

Football 1,2,3,4; Basketball 1,2,3; Baseball 3; Track 1,2; Typing Contest 3; Sodality 2,3,4; County Government 3.

MARY HILGER

Pep Club 1,2,4; Youth Club 4; Sodality 2,3,4; Typing Contest 3.

CLURES HOBBIENSIEFKEN

Pep Club 1,2,4; Sodality 3,4; Glee 1,2; County Government 3; Mock United Nations 4; Science Club 3; Science Fair 3; Youth Center 3; Youth Club 4; OAT Typing Contest 3; Monitor 4; National Honor Society 4.

ALOYSIUS JARECKI - "Al"

Glee 1; Track 1,2; Typing Contest 3; Class Play 4; Sodality 2,3,4.

GAYLORD KAFKA

Track 1,2,3,4; Football 3; Band 1,2,3,4; Sodality 3,4; Band Day 1; District Band Contest 1,2,3,4; Democracy Contest 4; Band Officer 4; Science Club 3; Pep Band 3,4; Latin Contest 2; Youth Center 1,2,3; National Honor Society 4.

DONALD KAMINSKI - "Doc"

Basketball 1,2,3,4; Football 1,2,3,4; Track 1,2; Baseball 1,2,3,4; Homecoming King 4; Football Captain 4; Youth Club 1,2,3,4; Latin Contest 1,2,3; Democracy Contest 3; Sodality 1,2,3,4; Unit Prefect 2; Sports Editor Annual 4; National Honor Society 4.

JEROME KNEIFEL - "Jerry"

Band 1,2,3,4; Server 1,2,3,4; Pep Band 1,2,3,4; Youth Club 1,2,3,4; Sodality 2,3,4; Band Day 1; Band Contest 1,2,3; Monitor 2; Venture Staff Artist 2; Ad Seller 4; Christmas Concert 1,2,3,4; OAT Typing Contest 3; Spring Concert 1,2,3,4; National Honor Society 4.

DIANE KOSIBA - "Diny"

Glee 2,3; Fremont Contest 2,3; Pep Club 1,2,3,4; Youth Center 1,2,3; Choral Clinic 3; Sodality 2,3,4; Majorette 3,4; Band 2; OAT Typing Contest 3; OGA Shorthand Contest 3; CDA Contest 2,3; Choir 1.

NORMA KRETZ

Glee 2,3; Choir 1,2,3; Sodality 3,4; Choral Clinic 2,3; OAT Typing Contest 3; OGA Shorthand Contest 3; Pep Club 1,2; CDA Contest 2,3,4.

ANTHONY KROENKE - "Tony"

Basketball 1,2,3,4; Football 1,2,3,4; Track 1,2,3,4; Homecoming Attendant 4; Monitor 2; Youth Club 1,2,3,4; Science Fair 3,4; Latin Contest 1,2; Democracy Contest 3; Freedom Speech 2; Poetry Contest 1,2,3,4; Sodality 1,2,3,4; Unit Vice-President 1; Sodality Treasurer 3,4; Venture Co-editor 3; Venture Reporter 2; Class Play 4; County Government 3; May Crowning 2,4.

KATHLEEN KURTENBACH - "Kathy"

Cheerleader 1; Pep Club 1,2; Glee 1,2; Choral Clinic 1; Sodality 3,4; Venture Editor 4; Annual Staff 4; OAT Typing Contest 3; OGA Shorthand Contest 3,4; Mock United Nations 3; Monitor 4; Poetry Contest 2,3; Estherbrook Shorthand Contest 3,4.

PAUL LANGAN

Football 1,2,3,4; Basketball 3; Track 1,2,3; Optimist Speech Contest Winner 2; Democracy Contest 3,4; Constitution Speech Contest 3,4; Class President 3; Youth Club President 4; Sodality 2,3,4; Latin Contest 2,3,4; Student Council 3,4; County Government 3; National Honor Society 4.

Senior Directory

LEA MARKHOFER

Band 1,2,3,4; Glee 1,2,3; Choir 1,2,3,4; Contest in Fremont 1,2,3,4; Band Day 1; Gregg Shorthand Contest 3; OAT Typing Contest 3; Sodality 2,3,4; Choral Clinic 1,3; Pep Club 1,2,3; Youth Center 1,2,3; Pep Band 2; Monitor 2; Spring Band Concert 1,2,3,4; Christmas Concert 1,2,3,4; Clarinet Quartet 1; Poetry Contest 1,2; Centennial Parade 2; Latin Contest 1,2; Quill & Scroll 3.

SHARON MESSERSMITH

Band 1,2,3,4; Glee 1,2; Contest in Fremont 1,2,3,4; Band Day 1; Choir 1,2,3; OAT Typing Contest 3; Sodality 2,3,4; Choral Clinic 1; Pep Club 1,2,3,4; Youth Center 1,2,3; Pep Band 2,3; Clarinet Quartet 1,2; Spring Band Concert 1,2,3,4; Christmas Concert 1,2,3,4; Science 3.

ARDA MEYSENBURG - "Artery"

Glee 1,2,3,4; Choir 3,4; Sodality 1,2,3,4; Democracy Contest 3; Pep Club 1,2,3,4; Pep Club Officer 4; Class Treasurer 2; CYO 1,2; Music Clinic 3; Music Contest 3; Chairman Assembly Committee 4; Youth Club 3,4; Venture Co-editor 3; Venture Editor 4; OAT Typing Contest 3; Quill & Scroll 3,4; Latin Contest 2; Gregg Shorthand Contest 3; Poetry Contest 3; SQT 4; CYO Convention 2; Y.C. Activities Chairman 4; Annual Advertisement 4; National Honor Society 4.

MAUREEN MICEK - "Bea"

Band 2,3,4; Majorette 1,2,3,4; Glee 1,2; Contest in Fremont 1,2,3,4; Band Day 1; Homecoming Attendant 4; Venture Reporter 1,2; Annual Staff 4; Class Officer 3; Band President 4; Choir 1,2,3; Gregg Shorthand Contest 3; OGA Shorthand Contest 3; OAT Typing Contest 3; Sodality 2,3,4; Choral Clinic 1; Pep Club 1,2,3,4; Youth Center 1,2,3; Pep Band 3,4; Monitor 2,3; Spring Band Concert 2,3,4; Christmas Concert 2,3,4; Horn Quartet 3.

MARY ELLEN MINETTE - "Mem"

Cheerleader 1,2,4; Glee 1,2; Pep Club 1,2,3,4; United Nations Conference 3; Student Council 1; Homecoming Attendant 4; Choral Clinic 1; Sodality 2,3,4; Contest in Fremont 1; Government Day 3; Monitor 2,3; Latin Contest 2; Annual Staff 4; CDA Contest 2,3; Venture Co-editor 4; Youth Center 1,2,3; Choir 1,2,3,4; OAT Typing Contest 3; Venture Reporter 3; Science Fair 2; Science Club 3.

MARGARET PENSICK - "Margie"

Pep Club 2; Sodality 1,2,3,4; Choir 1; OAT Typing Contest 3; OGA Shorthand Contest 3; Estherbrook Shorthand Contest 3; CDA Contest 2,3; Cheerleader 2; Glee 1,2,3; Choral Clinic 2,3; Play 1.

WILLIAM REUSS - "Bill"

Monitor 2; Democracy Contest 3; Poetry Contest 1,2; Track 2; Class Play 4; Science Club 3,4; Freedom Speech 2; Sodality 2,3,4; May Crowning 2,4; Home Room Vice-President 4; National Honor Society 4.

RICHARD SANSONI - "Dick"

Football 1,2,3,4; Track 1,2,3,4; Baseball 3,4; Annual Co-Editor 4; Homecoming Attendant 4; Class Vice-President 4; Democracy Contest 2; Latin Contest 2; Venture Co-Editor 3; Server 1,2,3,4; Science Club President 3; Sodality 2,3,4; County Government 3; Youth Center 1,2,3,4; Junior Rotarian 4; Football Co-Captain 4; Quill & Scroll 3; Monitor 2.

JANET SEBEK

Glee 1; Student Council 4; Home Room President 4; Choir 1,2,3; Music Contest in Fremont 1; OGA Shorthand Contest 3; Latin Contest 2; Choral Clinic 1; Pep Club 1,2,3,4; Sodality 2,3,4; Monitor 4; Venture Reporter 1,2; OAT Typing Contest 3; May Crowning 4; Christmas Concert 1.

LEROY SEILER

Sodality 2,3,4.

DOLORES SHEFCYK - "Dee"

Band 1,2,3,4; Pep Band 1,2,3,4; Clarinet Quartet 1,2; Clarinet Trio 3; Clarinet Duet 2,4; Student Director 4; Glee 1; Choral Clinic 1; All-State 3; Music Contest 1,2,3,4; State Music Clinic 4; Pep Club 1,2,3,4; Pep Club Officer 2,4; Sodality 2,3,4; Unit Officer 2; Band Day 1; Homecoming Attendant 4; Venture Reporter 1,2; Venture Co-Editor 3; Venture Editor 4; Annual Staff 4; Class Treasurer 3; Student Council 4; Estherbrook Shorthand Contest 3,4; OGA Shorthand Contest 3,4; Youth Center 1,2,3; Monitor 2; Poetry Contest 1,2; OAT Typing Contest 3; Democracy Contest 3; Constitution Speech Contest 3; County Government 3; SQT 4.

KATHRYN SHONKA - "Kathi"

Band 2,3,4; Band Day 2; Band Clinic 2; Glee 2,3,4; Choir 2,3,4; Venture Reporter 2,3; Venture Co-Editor 4; Press Clinic 2; Democracy Contest 3; Sodality 3,4; Cheerleader 3,4; Pep Club 1,2,3,4; Homecoming Attendant 4; State Music Convention 4; County Government 3; Class Officer 4; Youth Club Officer 4; Latin Contest 3; OAT Typing Contest 3; Class Play 1; SQT 4; Music Clinic 3; Youth Club 3,4; Annual Advertisement 4; National Honor Society 4.

PATRICIA SLEDDENS - "Patty"

Glee 1,2; Pep Club 1,2,4; Choral Clinic 1; Contest in Fremont 1,2; Choir 1; Sodality 2,4; Youth Center 1,2; Latin Contest 2; Class Play 3; Girls Softball Team 3; Girls Volleyball Team 3.

JANET SLIVA

Glee 1,2,3; Choir 1,2,3; Choral Clinic 1,2; Latin Contest 2; Music Contest 1,2,3; Pep Club 1,2,3,4; Annual Staff 4; Youth Center 1,2,3; Sodality 2,3,4; OAT Typing Contest 3; Science Fair 2,3; Monitor 3; CDA Contest 2,3; Christmas Concert 1.

MARGARET SLIVA - "Margie"

Glee 1,2,3; Choir 1,2,3; Pep Club 1,2,4; Band 3; Play 2,3; Sodality 2,3,4; Y.C. 1,2; Contest in Fremont 1,2; Monitor 2; Latin Contest 1,2; Choral Clinic 1; Singing Trio 3; May Crowning 4; Glee Contest 1,2.

JANE SMITH

Pep Club 1,2; Physical Education 1,2; OAT Typing Contest 3; OGA Shorthand Contest 3; CDA Contest 3; Sodality 3,4; May Crowning 4; Monitor 4.

JANET SMITH

Pep Club 1,2; Physical Education 1,2; Sodality 3,4; May Crowning 4; CDA Contest 3; OGA Shorthand Contest 3; OAT Typing Contest 3.

EVA STACHURA

Youth Center 1,2,3; Pep Club 1,2,3,4; Sodality 2,3,4; Annual Staff 4; Venture Reporter 4; OAT Typing Contest 3; OGA Shorthand Contest 3; CDA Contest 2,3; Monitor 2,3,4; Choir 1.

PATRICIA STEINER - "Patty"

Choir 1,2; Glee 1,2; Mixed Chorus 1,2; Bookkeeping Contest 3; Sodality 4; Pep Club 2; Music Contest 1; Christmas Play 1.

PATRICK TOOLEY - "Pat"

Baseball 3,4; Football 1,2,3,4; Basketball 1,2,3,4; Youth Center 1,2,3; Youth Club 4; Boy's State 3; Sodality 2,3,4; Sodality Prefect 4; Youth Center Officer 3; Annual Sports Editor 4; County Government 3; Track 1,2,3,4; Latin Contest 2; Optimist Club Contest 2; Mass Server 1,2,3,4; Science Club 3; Homecoming Attendant 4; Junior Rotarian 4; National Honor Society 4.

JUDITH TYLLE - "Judy"

Glee 1; Choral Clinic 1; Music Contest 1; Choir 1,2,3; Pep Club 1,2,3,4; OAT Typing Contest 3; OGA Shorthand Contest 3; Youth Center 1,2,3; Latin Contest 2; Poetry Contest 2; Sodality 2,3,4; Sodality Secretary 2; Sodality Vice-President 4; Student Council Vice-President 3; Senior Class President 4; County Government 3; Homecoming Queen 4; Student Council 4; Monitor 2; Science Fair 3.

CAROLL WEMHOFF

Band 1,2,3,4; Sodality 2,3,4; Student Council Pres. 4; Class Play 4; Football 1,2,3,4; Track 2,3; Honor Society 4; Sever 1,2,3,4; Rotary Club 3,4.

NICHOLAS WHEELER - "Nick"

Band 1,2; Youth Center 1,2,3; Track 2; Sodality 2,3,4; Poetry Contest 1,2,3; OAT Typing Contest 3.

MARY KAY WOZNY - "Miki"

Glee 1; Pep Club 1,2,3,4; Venture Co-Editor 3; Venture Editor 4; Annual Staff 4; Democracy Contest 4; Sodality 2,3,4; Youth Center 1,2,3; Youth Club 4; Monitor 3; Student Council 4; Choir 1,2,3,4; OGA Shorthand Contest 3; OAT Typing Contest 3; Latin Contest 3; Quill & Scroll 3,4; United Nations Conference 3,4; CDA Poetry Contest 2,3; SQT 4; Sodality Treasurer 2; Estherbrook Shorthand Contest 3; National Honor Society 4.

DELORES ZYWIEC - "Dee"

Glee 1,3; Youth Center 1,2,3; Sodality 2,3,4; Music Contest 1,3; OAT Typing Contest 3; OGA Shorthand Contest 3; Pep Club 1,2,4; Choir 1,2; Science Fair 2; Monitor 4; Poetry Contest 2,3.



